



# ANTHEM

MODERN TOWNS  
LAKESHORE PARK



**SAM McDADI**  
REAL ESTATE INC BROKERAGE



**BOOTH.**





# ANTHEM

MODERN TOWNS  
LAKESHORE PARK

## MODERN MISSISSAUGA LIVING

The newest development in Mississauga's Lakeview Community located along Lakeshore Road East. ANTHEM features an intimate block of 97 modern towns in where future residents will be just moments away from Lake Ontario, MiWay Transit, Long Branch GO Station, Humber College, Sherway Gardens, Port Credit and so much more.

---

## ACCESS EXCLUSIVELY THROUGH



**SAM McDADI**  
REAL ESTATE INC BROKERAGE

905. 502. 1500

| [McDADI.COM](http://McDADI.COM)





## BUILDING DETAILS

**Construction Status:** Pre-Construction

**Sale Status:** SELLING NOW - Spring 2020

**Address:**

**BLOCK A** - 1407 Lakeshore Road East

[Lakeshore Road East/Cherriebell Road](#)

**BLOCK B** - 1041 Lakeshore Road East

[Lakeshore Road East/Ogden Road](#)

**Building Type:** Condo Townhomes

**Number of Storeys:** 4 & 5 Storeys

**Number Of Units:** 97

**Architects:** Q4 Architects

**Builder:** Wilkinson Construction

**Estimated Completion:** 18-24 Months







## REASONS TO BUY

### 01. PRICE



With units starting in the **high \$400,000's**, inventory in this price range, location and age of build is slim. This is a great opportunity for any investor, end-user or first-time home buyer to enter the Real Estate market.

### 02. DESIGN



**BOOTH Developments** continues to build projects where quality, workmanship and value go hand in hand. Their forward thinking approach to design, combined with their contemporary aspirations ensure that each project incorporates the latest trends in architectural design, from bold exteriors to refined interiors.

### 03. LOCATION



Steps to the Lake, minutes from Port Credit, Humber College, Sherway Gardens, Toronto and easy access to Transit: Long Branch GO Station, MiWay Transit. Enjoy all that Lakeview has to offer and more.

### 04. INVESTMENT



By registering with us, you will have first access to VIP pricing, packages, incentives and floor plans — raising your property's appreciation potential.









## F E A T U R E S + F I N I S H E S

### 01.

#### **Anthem Towns**

- A modern development consisting of 97 stacked townhomes
- Contemporary elevations with designer colour combinations to create a sophisticated look
- Architecturally-designed landscaping and planting
- Retail space with frontage onto Lakeshore Road
- Illuminated walkways with custom selected path lighting features\*
- Energy efficient windows
- Exterior pre-finished insulated front entry door
- Exterior front door entry package in satin-nickel, door chime, grip set, and deadbolt\*
- Sliding door to private balcony
- Balcony with metal & glass railings
- Secured resident parking spaces & storage lockers
- Visitor parking spaces available
- Resident bicycle parking spots
- Stunning private rooftop terraces on select units

### 02.

#### **Stunning Interiors**

- Nine foot (9 ft) high ceilings, approximately, except where bulkheads exist or drop ceilings
- Smooth ceilings throughout
- 4" square profile baseboard
- All staircases with natural oak treads, risers and handrail
- Builder white painted interior walls
- Lever-style, chrome-finish interior door hardware
- Wire shelving in closets\*
- Wide-plank, designer-selected laminate flooring
- Elegant porcelain or ceramic tile flooring







## F E A T U R E S + F I N I S H E S

### 03.

#### Elegant Kitchens

- Contemporary European-inspired kitchen cabinetry in a selection of colours\*
- Hard surface countertop in a selection of colours\*
- Porcelain or ceramic tile backsplash\*
- Undermount contemporary single bowl stainless steel sink
- Single-lever faucet set with pull-out spray feature
- Brand name stainless steel (energy efficient) kitchen appliance package including refrigerator, range oven, dishwasher, combined microwave and exhaust vented to the exterior. Size of appliances may vary between 24" and 30" based on the applicable floorplan.

### 04.

#### Beautiful Bathrooms

- Contemporary bathroom cabinetry
- Porcelain surface countertop\*
- Toilet and basin sink
- Glass shower enclosure with porcelain-tiled shower stall with light included
- Soaker bathtub\*
- Polished chrome faucet and shower set
- Polished chrome bathroom accessories
- Porcelain or ceramic tile flooring
- Wall-mounted vanity mirror
- Pressure balanced mixing valve in the bathtub and shower
- Exhausted fan

### 05. Laundry

- Porcelain tile 12" x 24" flooring\*
- White stacked front loading washer and dryer
- Floor drain in laundry\*





## F E A T U R E S + F I N I S H E S

### 06.

#### Peace of Mind

- Building surveillance cameras in the underground parking lot of Anthem II and secure parking garages and/or weather protection at Anthem I.
- Remote control vehicle access system to parking garage and unit garages
- Smoke, carbon monoxide and heat detectors

### 07.

#### Electrical Details

- Individual 100 amp electrical panel with circuit breakers\*
- White "decora" style receptacles and switches throughout
- Ceiling mounted fixture\*
- Capped ceiling light fixture outlet and switched plugs in dining room, bedrooms and study

### 08.

#### Mechanical Features

- Combination high-efficiency air handler with ECM blower for heating and high-efficiency hot water heater (owned)
- Individual suite hydro, water and gas meters
- Air Conditioning in each unit





**FLOOR PLANS**



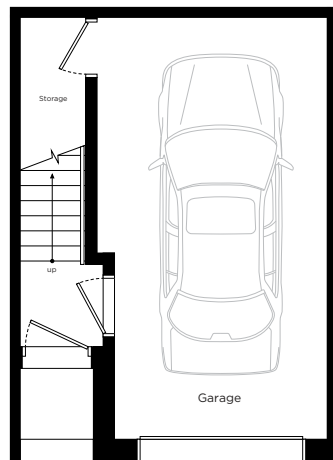


All sizes, dimensions and specifications are subject to change without notice. This plan is not to scale and is subject to architectural review and revision. In order to comply with building site conditions and municipal, structural, vendor and/or architectural requirements, actual living areas may vary from floor area stated. Floor area has been measured and may vary in accordance with Bulletin #22 published by the Tarion Warranty Corporation. Window location, size and type may vary without notice. Purchasers acknowledge that the dwelling units with terraces may contain an interior step up for access to such terraces. Furnishings are for display purposes only. Location of columns, size and type may vary without notice. E.&O.E. Nov 2019

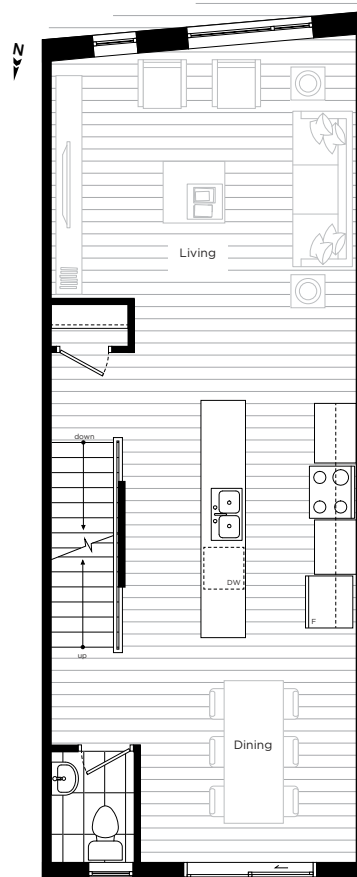


All sizes, dimensions and specifications are subject to change without notice. This plan is not to scale and is subject to architectural review and revision. In order to comply with building site conditions and municipal, structural, vendor and/or architectural requirements, actual living areas may vary from floor area stated. Floor area has been measured and may vary in accordance with Bulletin #22 published by the Tarion Warranty Corporation. Window location, size and type may vary without notice. Purchasers acknowledge that the dwelling units with terraces may contain an interior step up for access to such terraces. Furnishings are for display purposes only. Location of columns, size and type may vary without notice. E.&O.E. Nov 2019

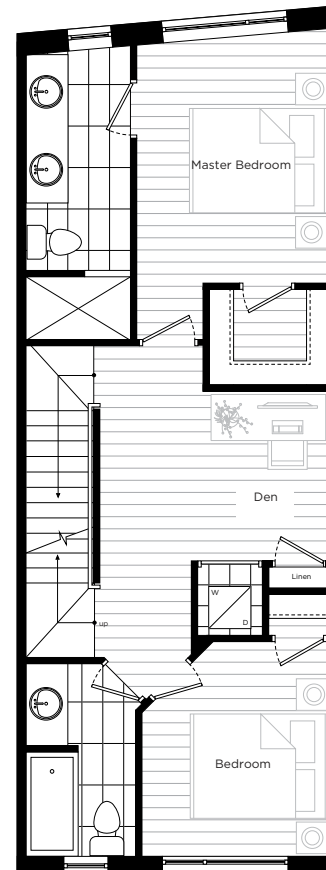




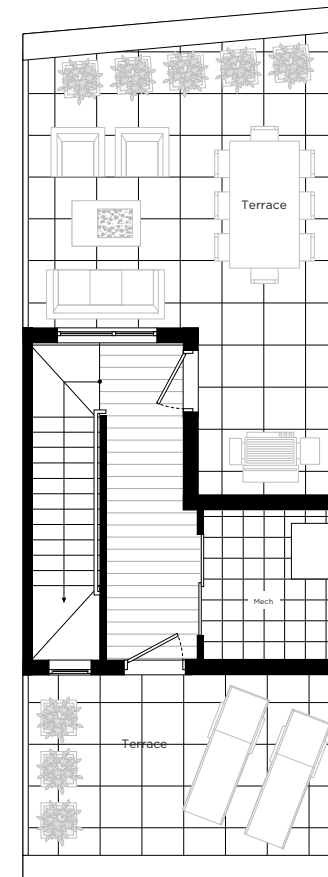
Main Level



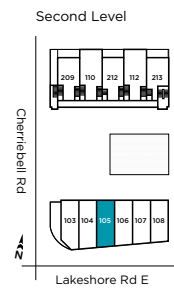
Second Level



Third Level



Rooftop



All sizes, dimensions and specifications are subject to change without notice. This plan is not to scale and is subject to architectural review and revision. In order to comply with building site conditions and municipal, structural, vendor and/or architectural requirements, actual living areas may vary from floor area stated. Floor area has been measured and may vary in accordance with Bulletin #22 published by the Taron Warranty Corporation. Window location, size and type may vary without notice. Purchasers acknowledge that the dwelling units with terraces may contain an interior step up for access to such terraces. Furnishings are for display purposes only. Location of columns, size and type may vary without notice. E.&O.E. Nov 2019

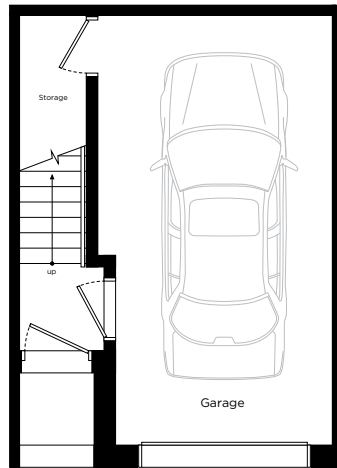
**A 106**

Two Bedroom + Den  
**1521 sqf**

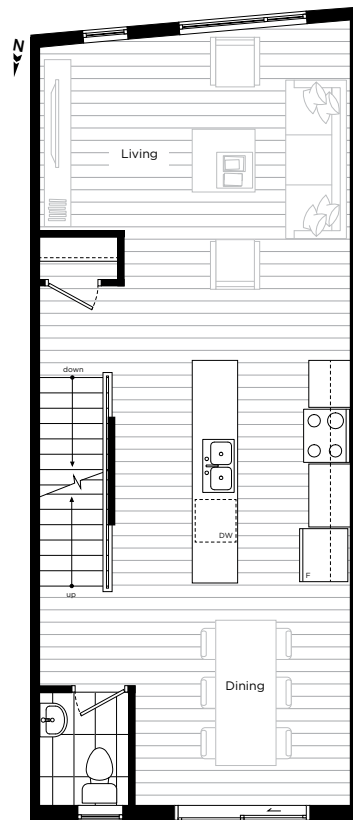
Plus 409 sqf rooftop terrace



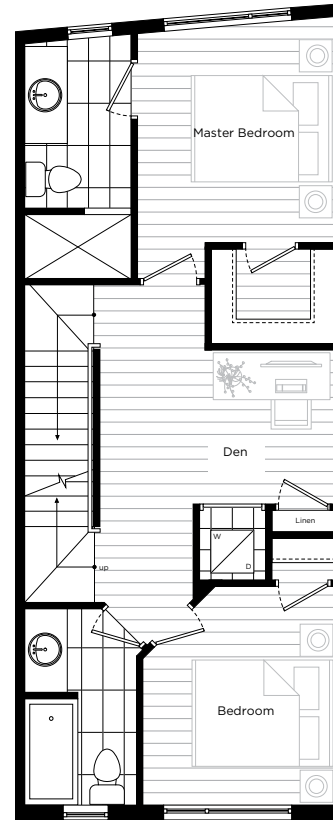
All sizes, dimensions and specifications are subject to change without notice. This plan is not to scale and is subject to architectural review and revision. In order to comply with building site conditions and municipal, structural, vendor and/or architectural requirements, actual living areas may vary from floor area stated. Floor area has been measured and may vary in accordance with Bulletin #22 published by the Tarion Warranty Corporation. Window location, size and type may vary without notice. Purchasers acknowledge that the dwelling units with terraces may contain an interior step up for access to such terraces. Furnishings are for display purposes only. Location of columns, size and type may vary without notice. E.&O.E. Nov 2019



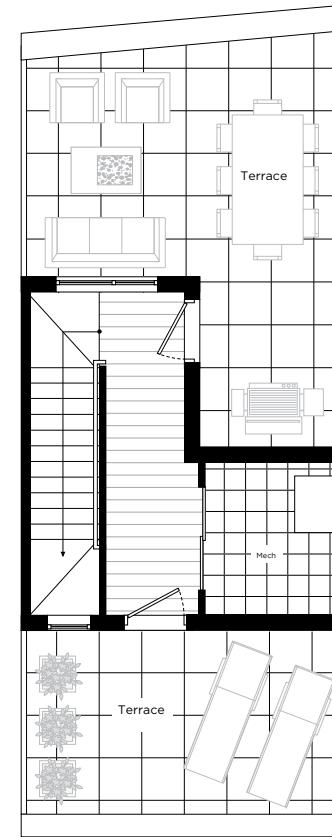
Main Level



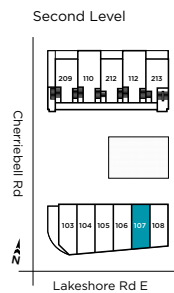
Second Level



Third Level



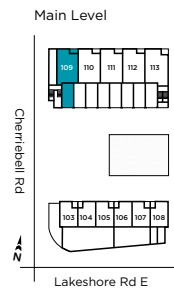
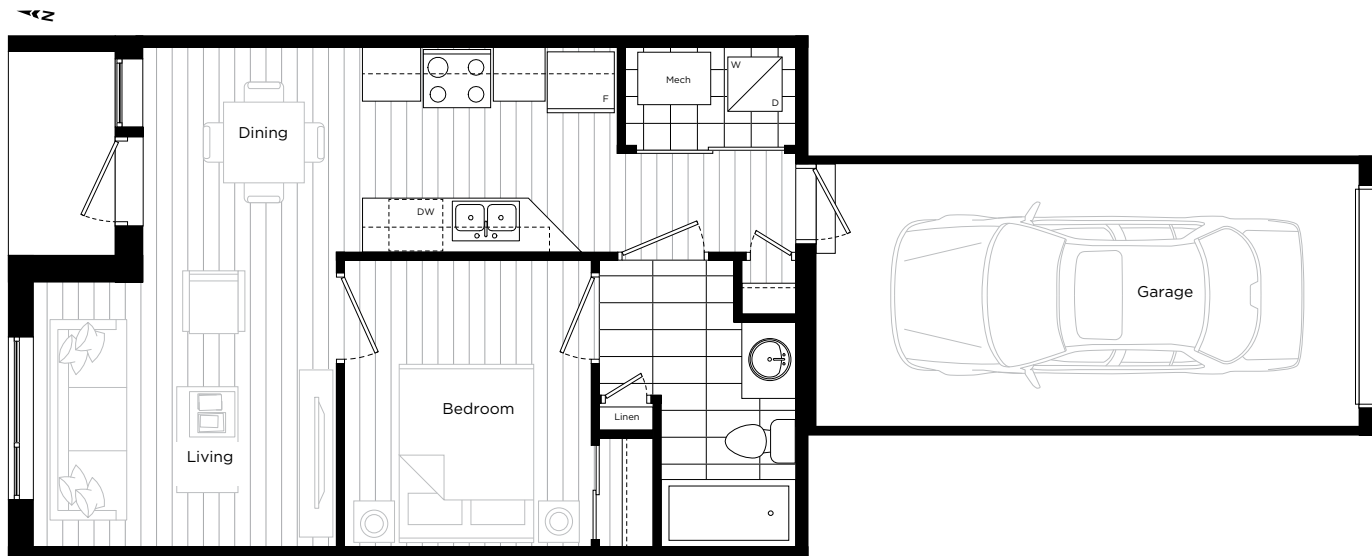
Rooftop



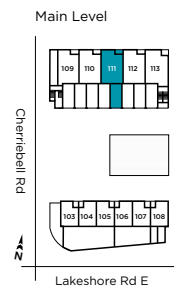
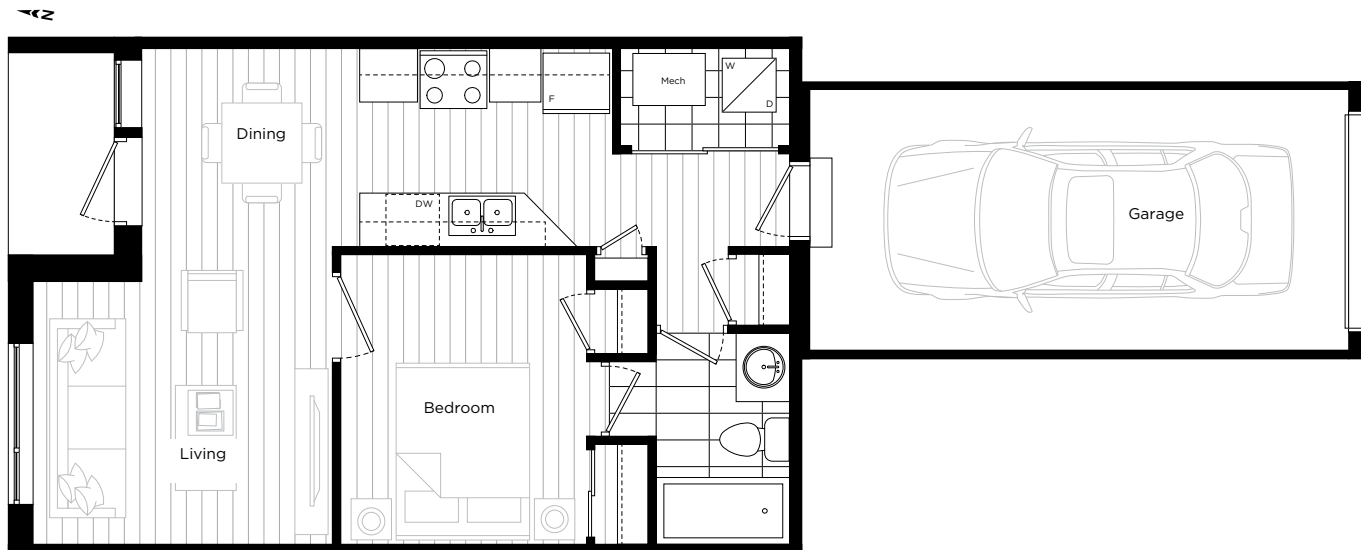
All sizes, dimensions and specifications are subject to change without notice. This plan is not to scale and is subject to architectural review and revision. In order to comply with building site conditions and municipal, structural, vendor and/or architectural requirements, actual living areas may vary from floor area stated. Floor area has been measured and may vary in accordance with Bulletin #22 published by the Taron Warranty Corporation. Window location, size and type may vary without notice. Purchasers acknowledge that the dwelling units with terraces may contain an interior step up for access to such terraces. Furnishings are for display purposes only. Location of columns, size and type may vary without notice. E.&O.E. Nov 2019



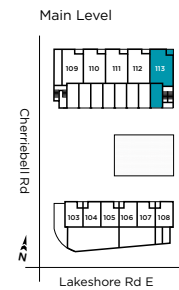
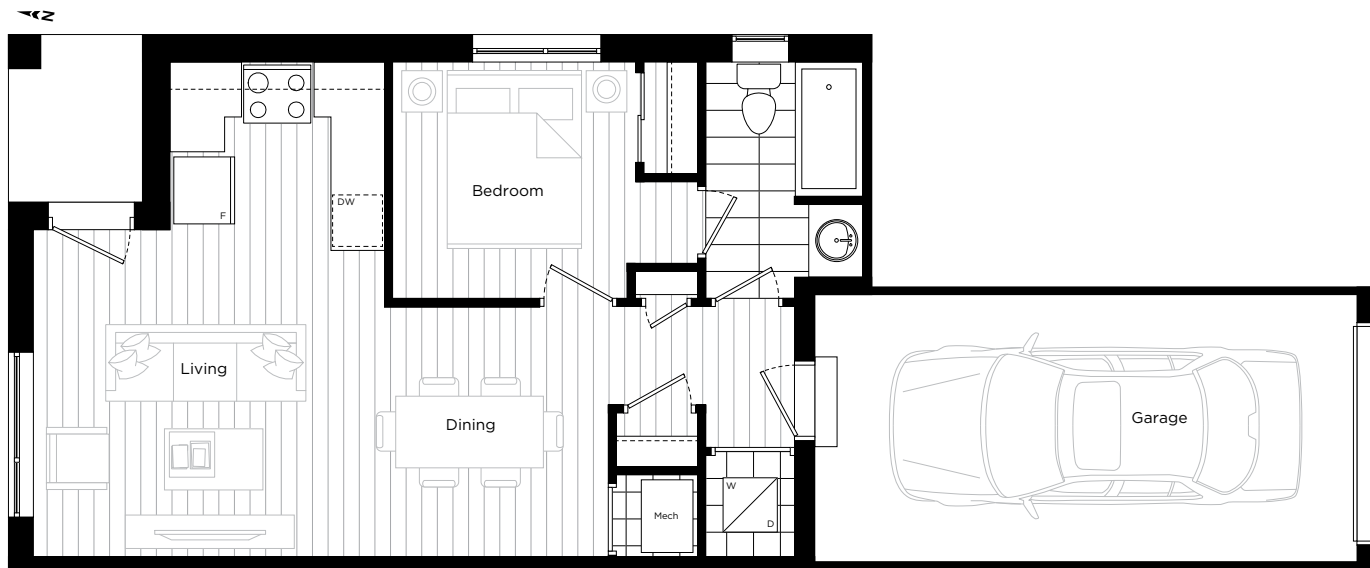
All sizes, dimensions and specifications are subject to change without notice. This plan is not to scale and is subject to architectural review and revision. In order to comply with building site conditions and municipal, structural, vendor and/or architectural requirements, actual living areas may vary from floor area stated. Floor area has been measured and may vary in accordance with Bulletin #22 published by the Taron Warranty Corporation. Window location, size and type may vary without notice. Purchasers acknowledge that the dwelling units with terraces may contain an interior step up for access to such terraces. Furnishings are for display purposes only. Location of columns, size and type may vary without notice. E.&O.E. Nov 2019



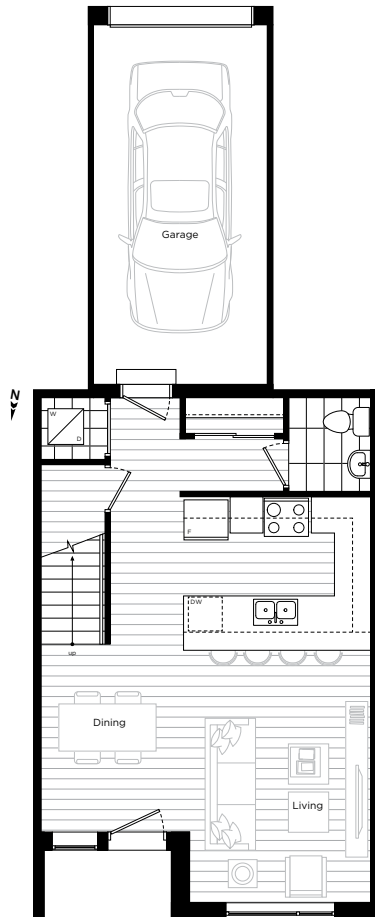
All sizes, dimensions and specifications are subject to change without notice. This plan is not to scale and is subject to architectural review and revision. In order to comply with building site conditions and municipal, structural, vendor and/or architectural requirements, actual living areas may vary from floor area stated. Floor area has been measured and may vary in accordance with Bulletin #22 published by the Taron Warranty Corporation. Window location, size and type may vary without notice. Purchasers acknowledge that the dwelling units with terraces may contain an interior step up for access to such terraces. Furnishings are for display purposes only. Location of columns, size and type may vary without notice. E.&O.E. Nov 2019



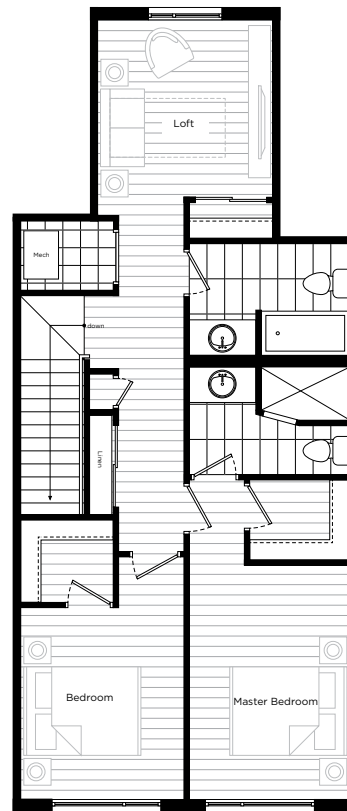
All sizes, dimensions and specifications are subject to change without notice. This plan is not to scale and is subject to architectural review and revision. In order to comply with building site conditions and municipal, structural, vendor and/or architectural requirements, actual living areas may vary from floor area stated. Floor area has been measured and may vary in accordance with Bulletin #22 published by the Taron Warranty Corporation. Window location, size and type may vary without notice. Purchasers acknowledge that the dwelling units with terraces may contain an interior step up for access to such terraces. Furnishings are for display purposes only. Location of columns, size and type may vary without notice. E.&O.E. Nov 2019



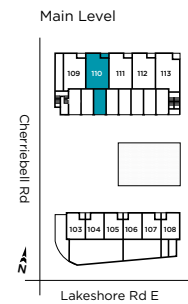
All sizes, dimensions and specifications are subject to change without notice. This plan is not to scale and is subject to architectural review and revision. In order to comply with building site conditions and municipal, structural, vendor and/or architectural requirements, actual living areas may vary from floor area stated. Floor area has been measured and may vary in accordance with Bulletin #22 published by the Tarion Warranty Corporation. Window location, size and type may vary without notice. Purchasers acknowledge that the dwelling units with terraces may contain an interior step up for access to such terraces. Furnishings are for display purposes only. Location of columns, size and type may vary without notice. E.&O.E. Nov 2019



Main Level

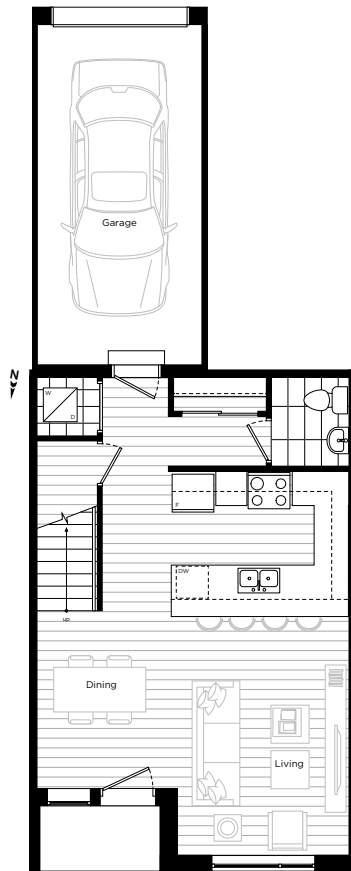


Second Level

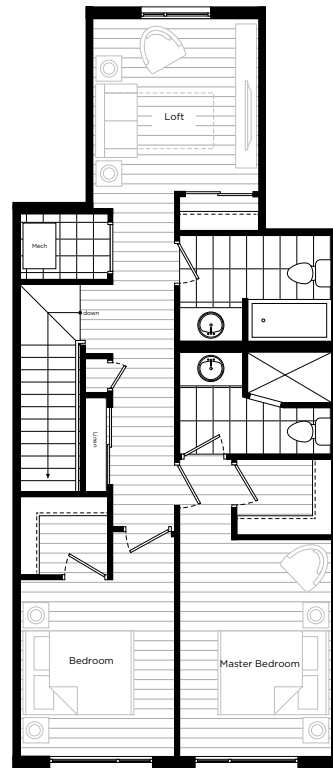


All sizes, dimensions and specifications are subject to change without notice. This plan is not to scale and is subject to architectural review and revision. In order to comply with building site conditions and municipal, structural, vendor and/or architectural requirements, actual living areas may vary from floor area stated. Floor area has been measured and may vary in accordance with Bulletin #22 published by the Taron Warranty Corporation. Window location, size and type may vary without notice. Purchasers acknowledge that the dwelling units with terraces may contain an interior step up for access to such terraces. Furnishings are for display purposes only. Location of columns, size and type may vary without notice. E.&O.E. Nov 2019

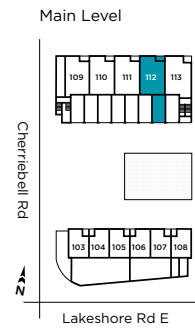




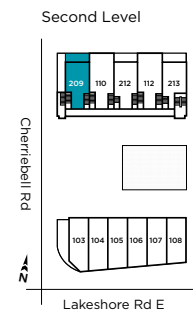
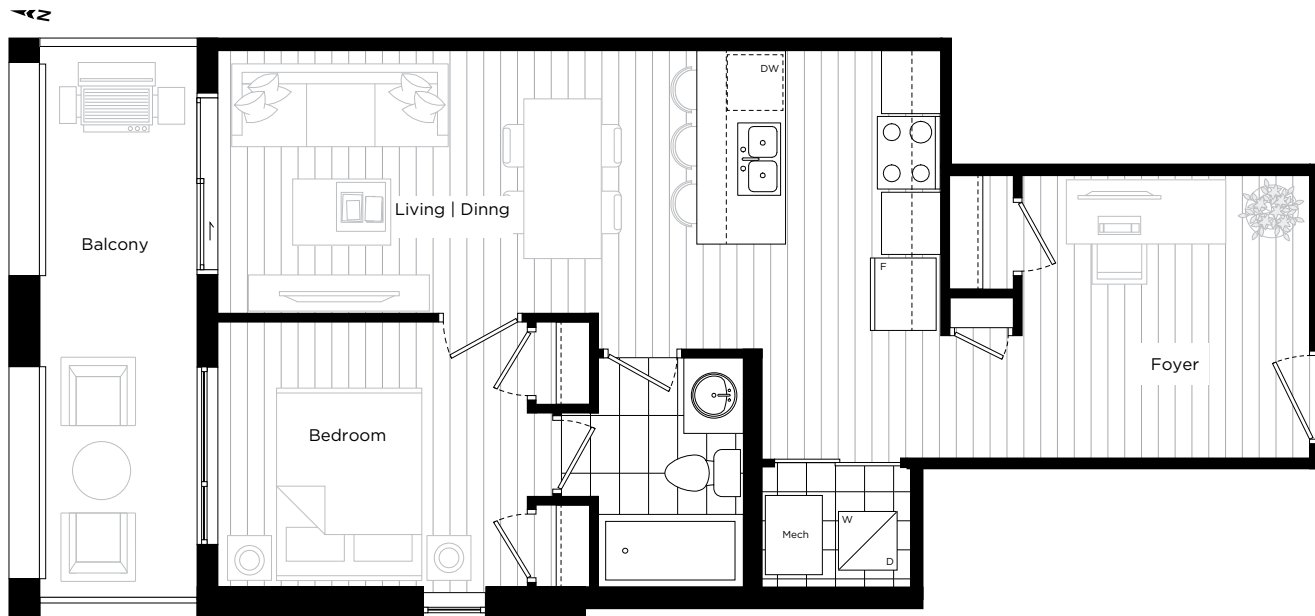
Main Level



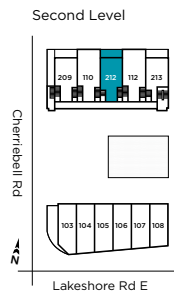
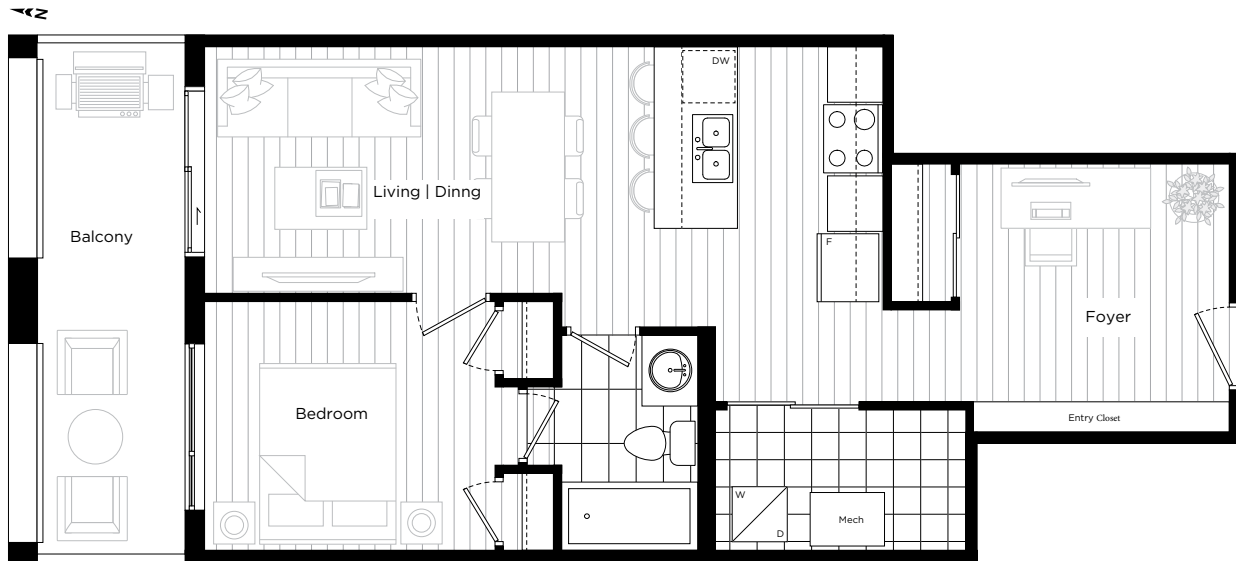
Second Level



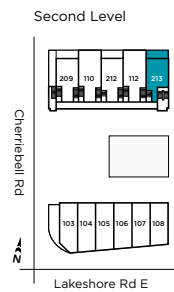
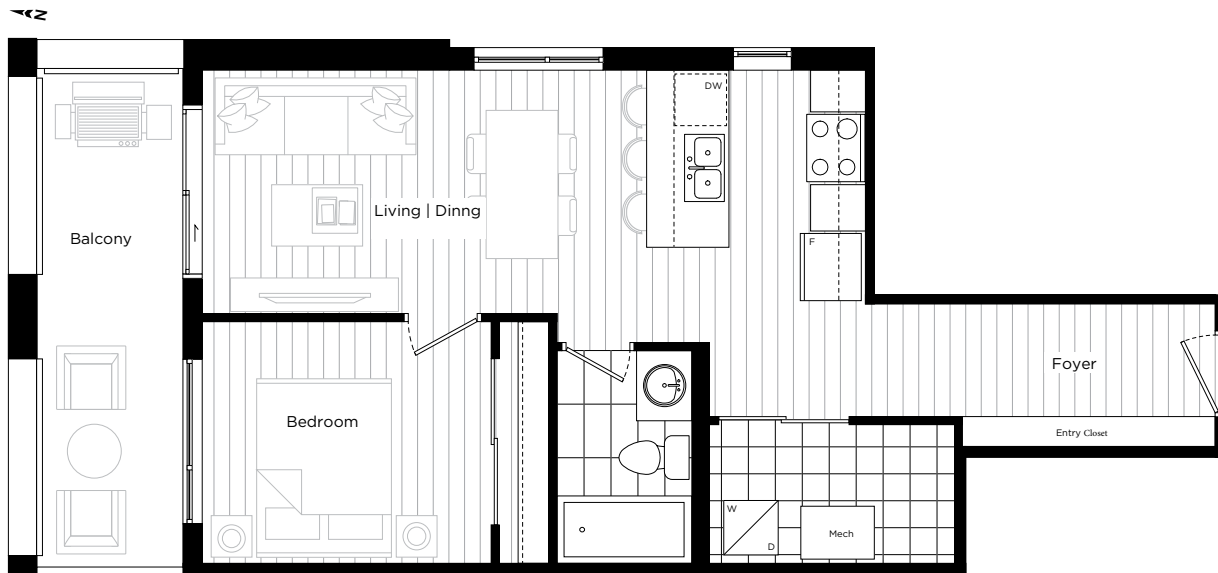
All sizes, dimensions and specifications are subject to change without notice. This plan is not to scale and is subject to architectural review and revision. In order to comply with building site conditions and municipal, structural, vendor and/or architectural requirements, actual living areas may vary from floor area stated. Floor area has been measured and may vary in accordance with Bulletin #22 published by the Taron Warranty Corporation. Window location, size and type may vary without notice. Purchasers acknowledge that the dwelling units with terraces may contain an interior step up for access to such terraces. Furnishings are for display purposes only. Location of columns, size and type may vary without notice. E.&O.E. Nov 2019



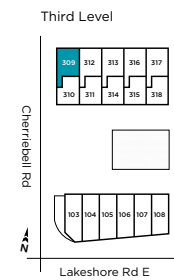
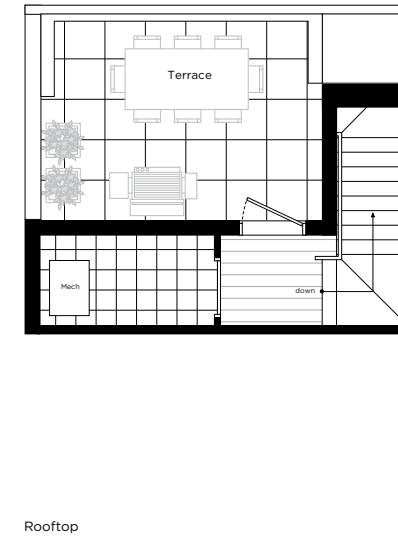
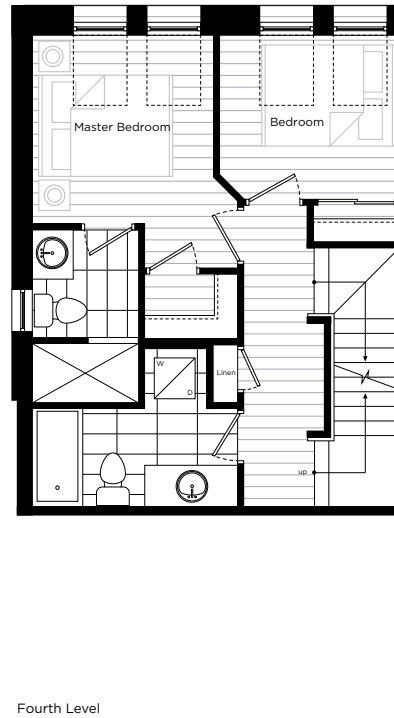
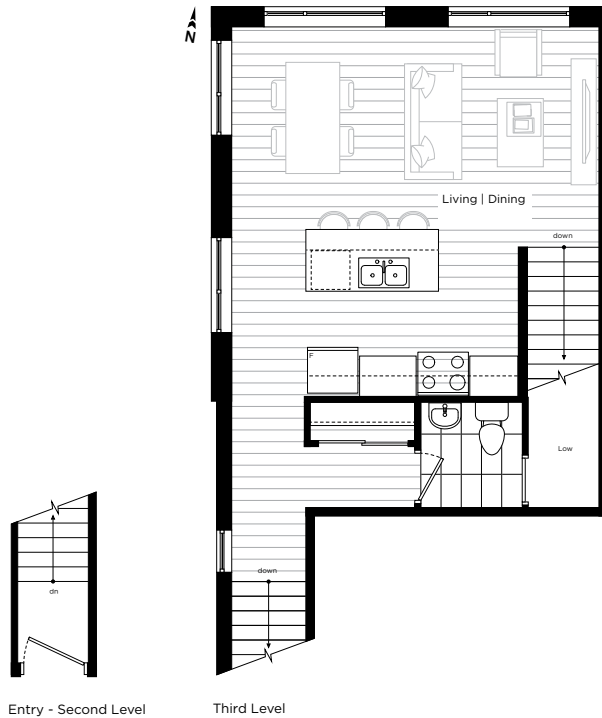
All sizes, dimensions and specifications are subject to change without notice. This plan is not to scale and is subject to architectural review and revision. In order to comply with building site conditions and municipal, structural, vendor and/or architectural requirements, actual living areas may vary from floor area stated. Floor area has been measured and may vary in accordance with Bulletin #22 published by the Taron Warranty Corporation. Window location, size and type may vary without notice. Purchasers acknowledge that the dwelling units with terraces may contain an interior step up for access to such terraces. Furnishings are for display purposes only. Location of columns, size and type may vary without notice. E.&O.E. Nov 2019



All sizes, dimensions and specifications are subject to change without notice. This plan is not to scale and is subject to architectural review and revision. In order to comply with building site conditions and municipal, structural, vendor and/or architectural requirements, actual living areas may vary from floor area stated. Floor area has been measured and may vary in accordance with Bulletin #22 published by the Taron Warranty Corporation. Window location, size and type may vary without notice. Purchasers acknowledge that the dwelling units with terraces may contain an interior step up for access to such terraces. Furnishings are for display purposes only. Location of columns, size and type may vary without notice. E.&O.E. Nov 2019



All sizes, dimensions and specifications are subject to change without notice. This plan is not to scale and is subject to architectural review and revision. In order to comply with building site conditions and municipal, structural, vendor and/or architectural requirements, actual living areas may vary from floor area stated. Floor area has been measured and may vary in accordance with Bulletin #22 published by the Tarion Warranty Corporation. Window location, size and type may vary without notice. Purchasers acknowledge that the dwelling units with terraces may contain an interior step up for access to such terraces. Furnishings are for display purposes only. Location of columns, size and type may vary without notice. E.&O.E. Nov 2019

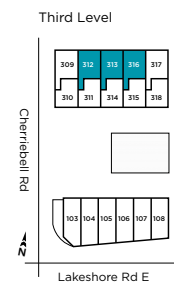
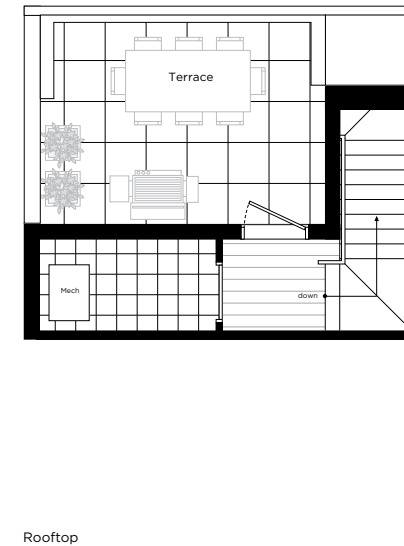
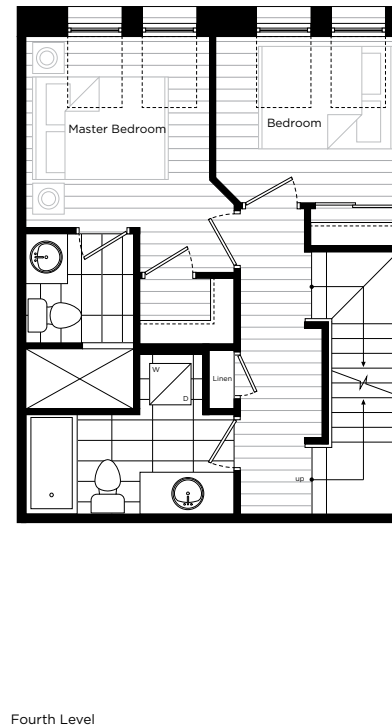
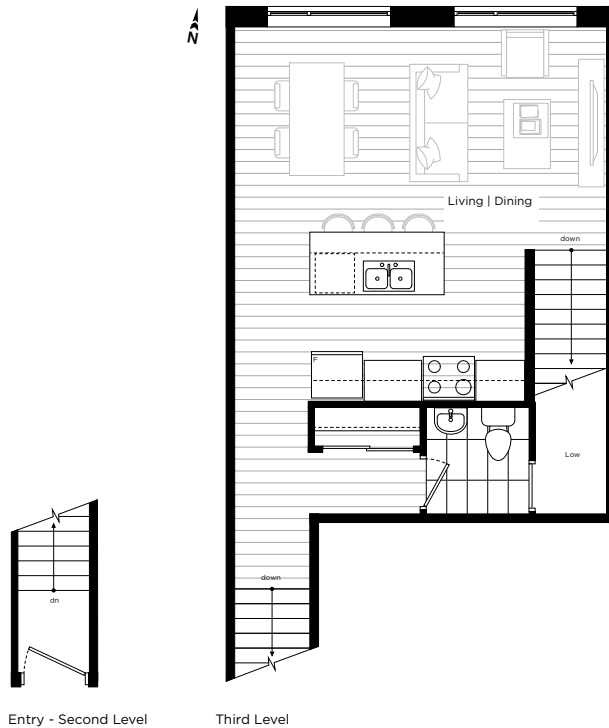


All sizes, dimensions and specifications are subject to change without notice. This plan is not to scale and is subject to architectural review and revision. In order to comply with building site conditions and municipal, structural, vendor and/or architectural requirements, actual living areas may vary from floor area stated. Floor area has been measured and may vary in accordance with Bulletin #22 published by the Tarion Warranty Corporation. Window location, size and type may vary without notice. Purchasers acknowledge that the dwelling units with terraces may contain an interior step up for access to such terraces. Furnishings are for display purposes only. Location of columns, size and type may vary without notice. E.&O.E. Nov 2019

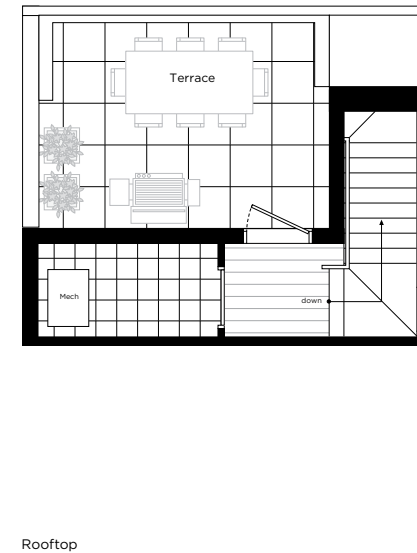
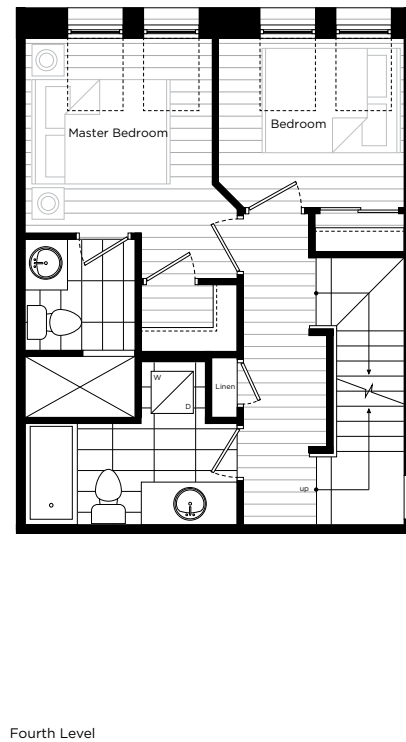
**A 312/313/316**

Two Bedroom  
**1165 sqf**

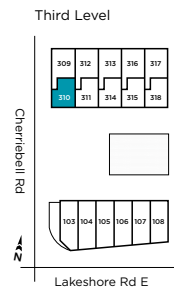
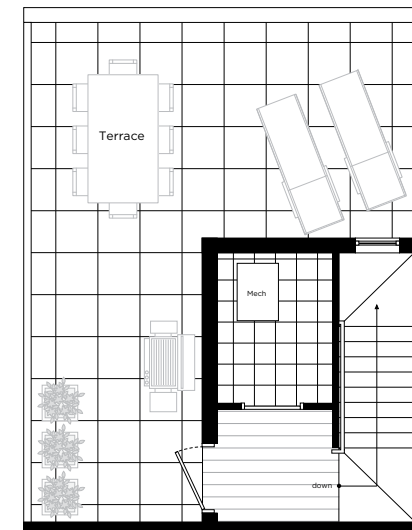
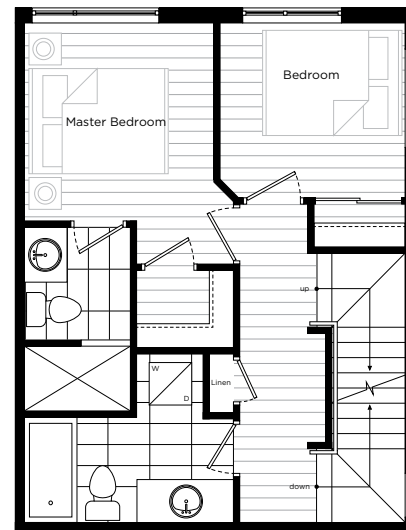
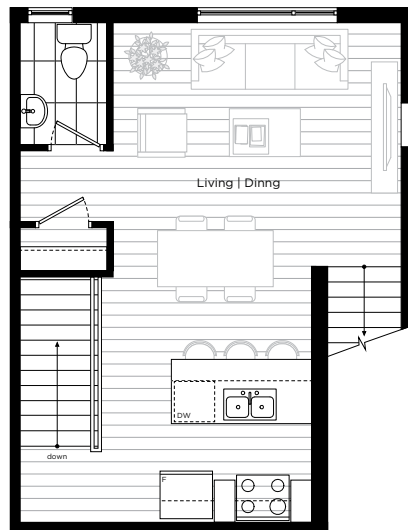
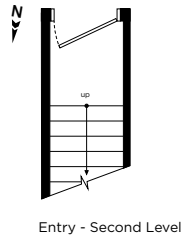
Plus 338 sqf rooftop terrace



All sizes, dimensions and specifications are subject to change without notice. This plan is not to scale and is subject to architectural review and revision. In order to comply with building site conditions and municipal, structural, vendor and/or architectural requirements, actual living areas may vary from floor area stated. Floor area has been measured and may vary in accordance with Bulletin #22 published by the Tarion Warranty Corporation. Window location, size and type may vary without notice. Purchasers acknowledge that the dwelling units with terraces may contain an interior step up for access to such terraces. Furnishings are for display purposes only. Location of columns, size and type may vary without notice. E.&O.E. Nov 2019



All sizes, dimensions and specifications are subject to change without notice. This plan is not to scale and is subject to architectural review and revision. In order to comply with building site conditions and municipal, structural, vendor and/or architectural requirements, actual living areas may vary from floor area stated. Floor area has been measured and may vary in accordance with Bulletin #22 published by the Taron Warranty Corporation. Window location, size and type may vary without notice. Purchasers acknowledge that the dwelling units with terraces may contain an interior step up for access to such terraces. Furnishings are for display purposes only. Location of columns, size and type may vary without notice. E.&O.E. Nov 2019



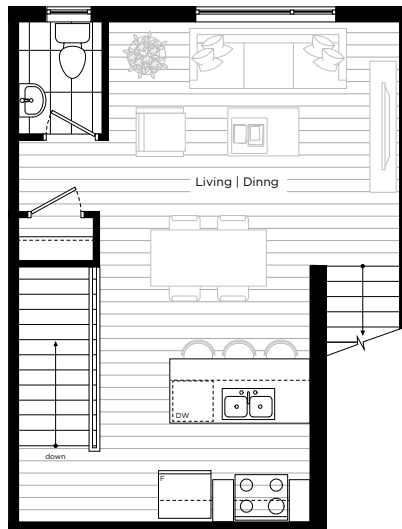
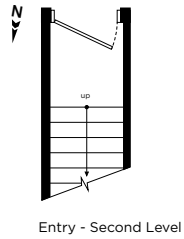
All sizes, dimensions and specifications are subject to change without notice. This plan is not to scale and is subject to architectural review and revision. In order to comply with building site conditions and municipal, structural, vendor and/or architectural requirements, actual living areas may vary from floor area stated. Floor area has been measured and may vary in accordance with Bulletin #22 published by the Taron Warranty Corporation. Window location, size and type may vary without notice. Purchasers acknowledge that the dwelling units with terraces may contain an interior step up for access to such terraces. Furnishings are for display purposes only. Location of columns, size and type may vary without notice. E.&O.E. Nov 2019



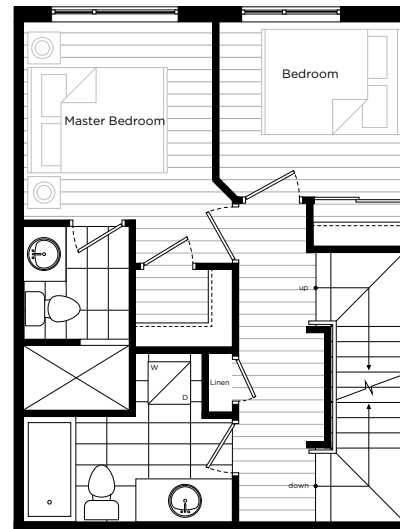
**A 311/314/215**

Two Bedroom  
**1130 sqf**

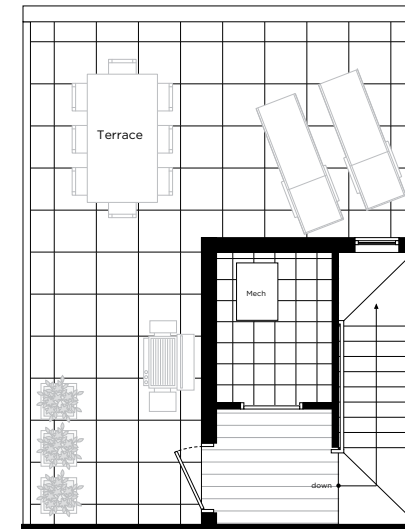
Plus 323 sqf rooftop terrace



Third Level



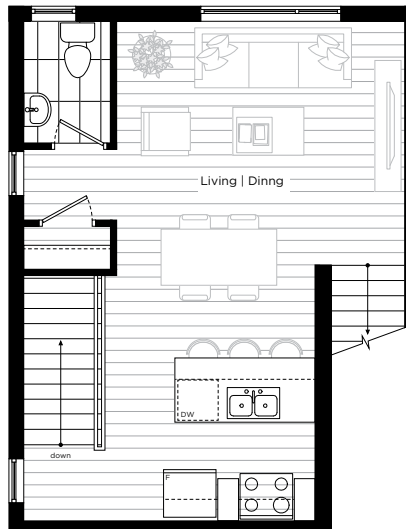
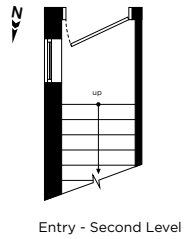
Fourth Level



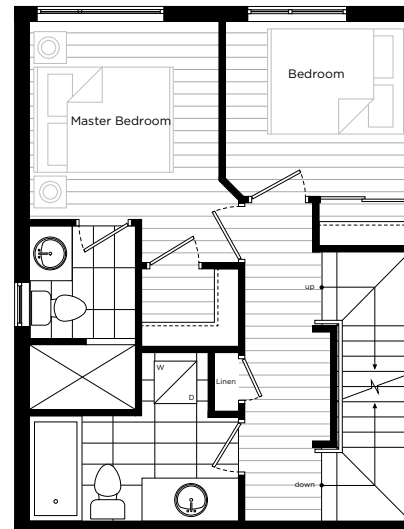
Rooftop



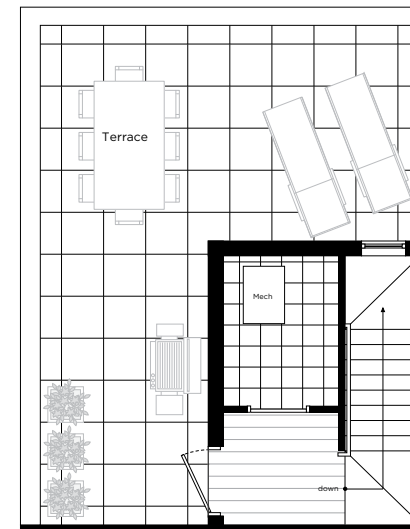
All sizes, dimensions and specifications are subject to change without notice. This plan is not to scale and is subject to architectural review and revision. In order to comply with building site conditions and municipal, structural, vendor and/or architectural requirements, actual living areas may vary from floor area stated. Floor area has been measured and may vary in accordance with Bulletin #22 published by the Taron Warranty Corporation. Window location, size and type may vary without notice. Purchasers acknowledge that the dwelling units with terraces may contain an interior step up for access to such terraces. Furnishings are for display purposes only. Location of columns, size and type may vary without notice. E.&O.E. Nov 2019



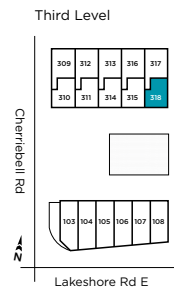
Third Level



Fourth Level



Rooftop

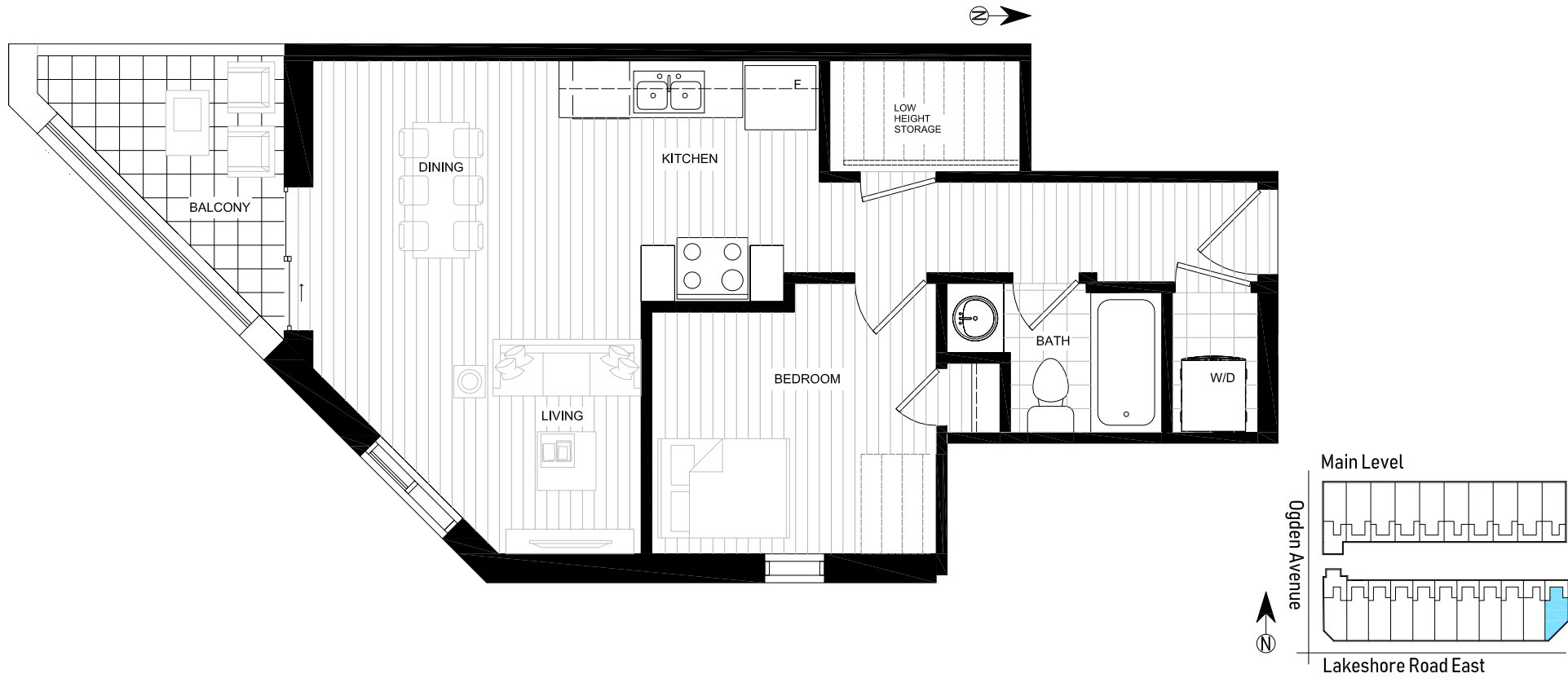


All sizes, dimensions and specifications are subject to change without notice. This plan is not to scale and is subject to architectural review and revision. In order to comply with building site conditions and municipal, structural, vendor and/or architectural requirements, actual living areas may vary from floor area stated. Floor area has been measured and may vary in accordance with Bulletin #22 published by the Taron Warranty Corporation. Window location, size and type may vary without notice. Purchasers acknowledge that the dwelling units with terraces may contain an interior step up for access to such terraces. Furnishings are for display purposes only. Location of columns, size and type may vary without notice. E.&O.E. Nov 2019

# FD 1

**FLOOR PLANS**





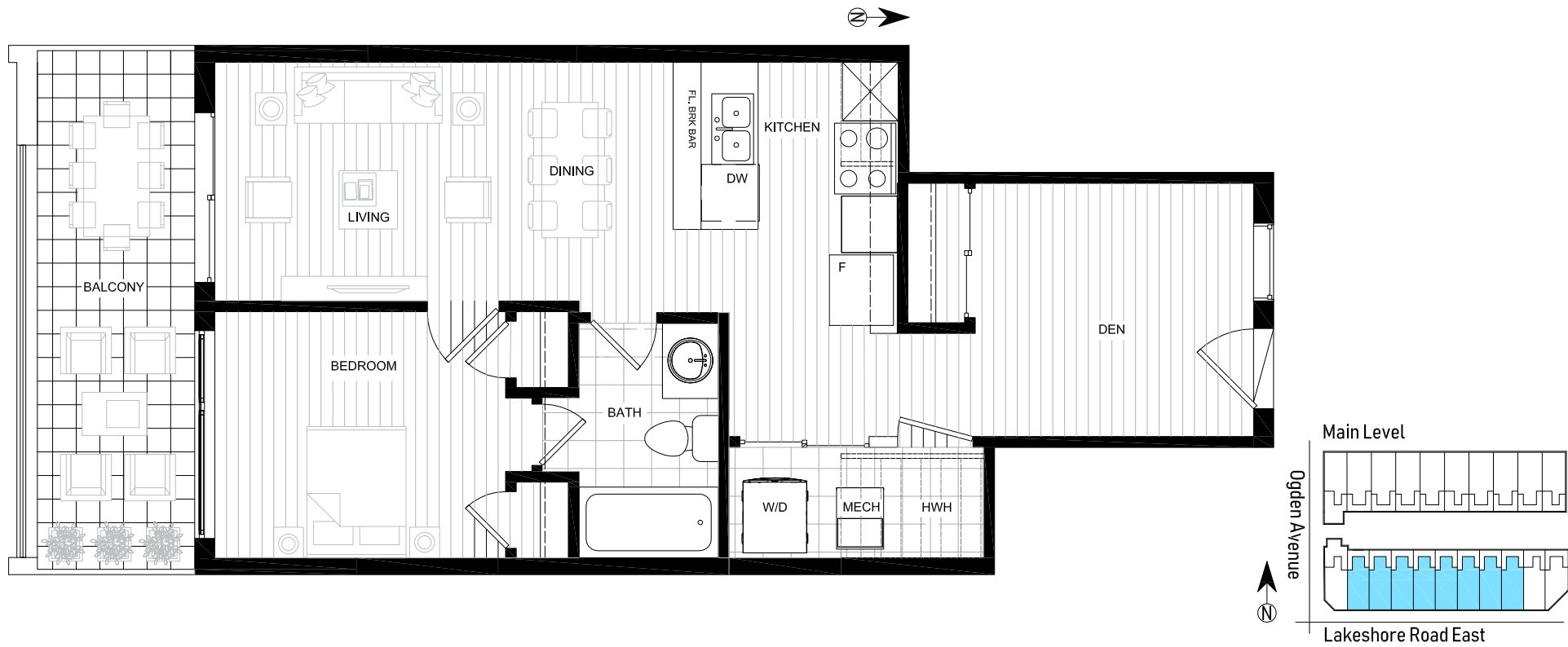
All sizes, dimensions and specifications are subject to change without notice. This plan is not to scale and is subject to architectural review and revision. In order to comply with building site conditions and municipal, structural, vendor and/or architectural requirements, actual living areas may vary from floor area stated. Floor area has been measured and may vary in accordance.

**B 202/203/204/205/206/207/208/209**

One Bedroom + Den  
**603 sqf**

Plus 140 sqf balcony

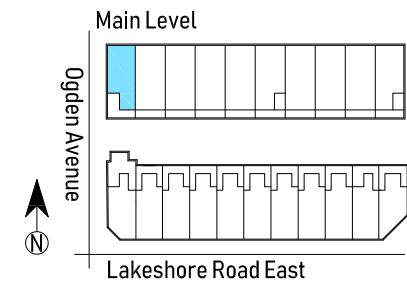
B



All sizes, dimensions and specifications are subject to change without notice. This plan is not to scale and is subject to architectural review and revision. In order to comply with building site conditions and municipal, structural, vendor and/or architectural requirements, actual living areas may vary from floor area stated. Floor area has been measured and may vary in accordance.

**B 210**  
One Bedroom  
**549 sqf**  
Plus 140 sqf balcony

**B**



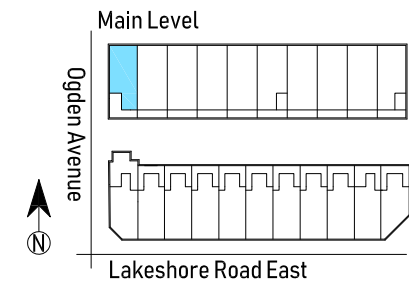
All sizes, dimensions and specifications are subject to change without notice. This plan is not to scale and is subject to architectural review and revision. In order to comply with building site conditions and municipal, structural, vendor and/or architectural requirements, actual living areas may vary from floor area stated. Floor area has been measured and may vary in accordance.

**B 211**

One Bedroom  
**549 sqf**

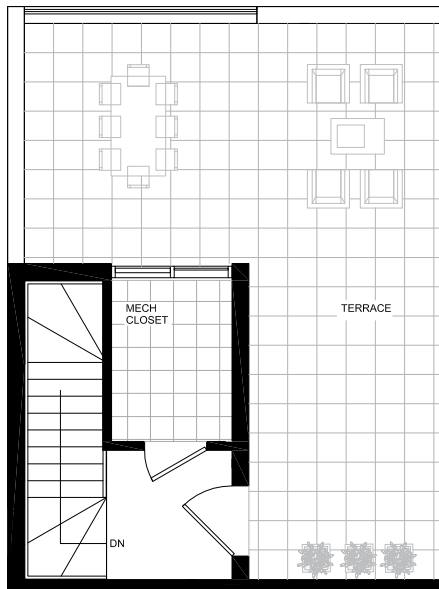
Plus 86 sqf balcony

B

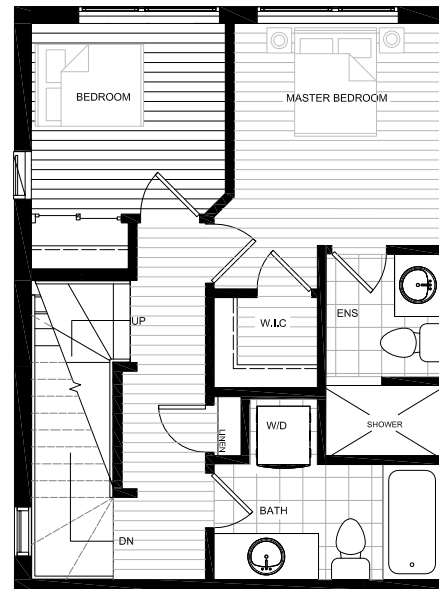


All sizes, dimensions and specifications are subject to change without notice. This plan is not to scale and is subject to architectural review and revision. In order to comply with building site conditions and municipal, structural, vendor and/or architectural requirements, actual living areas may vary from floor area stated. Floor area has been measured and may vary in accordance.

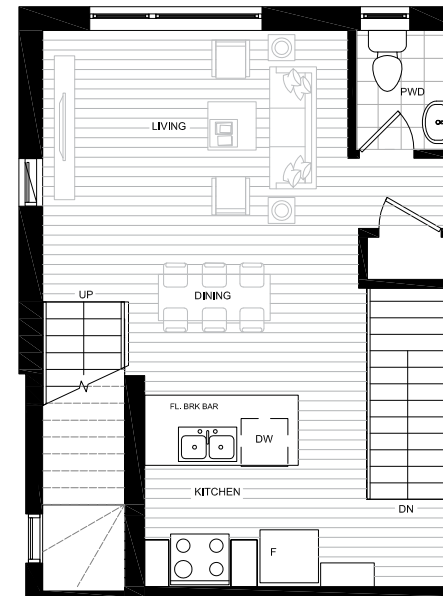




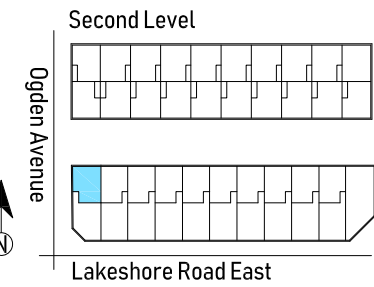
Rooftop Level



Second Level



Main Level



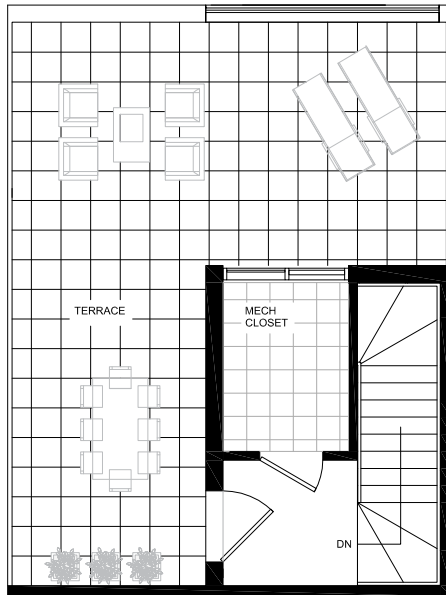
All sizes, dimensions and specifications are subject to change without notice. This plan is not to scale and is subject to architectural review and revision. In order to comply with building site conditions and municipal, structural, vendor and/or architectural requirements, actual living areas may vary from floor area stated. Floor area has been measured and may vary in accordance.

**B 304/305/308/309/312/313/316/317/320**

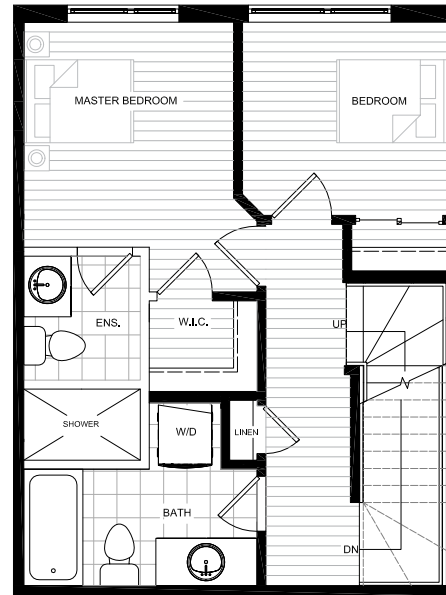
Two Bedroom  
**1098 sqf**

Plus 312 sqf rooftop terrace

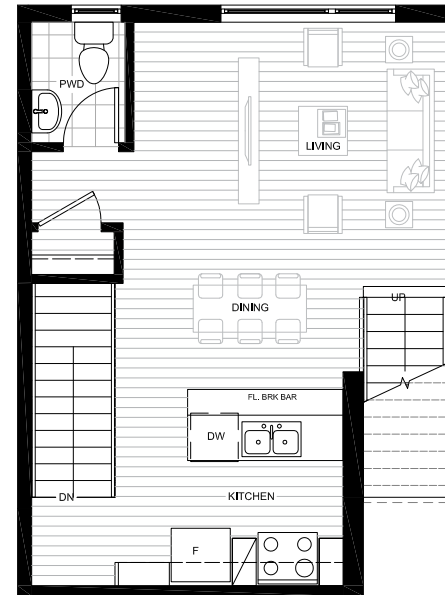
**B**



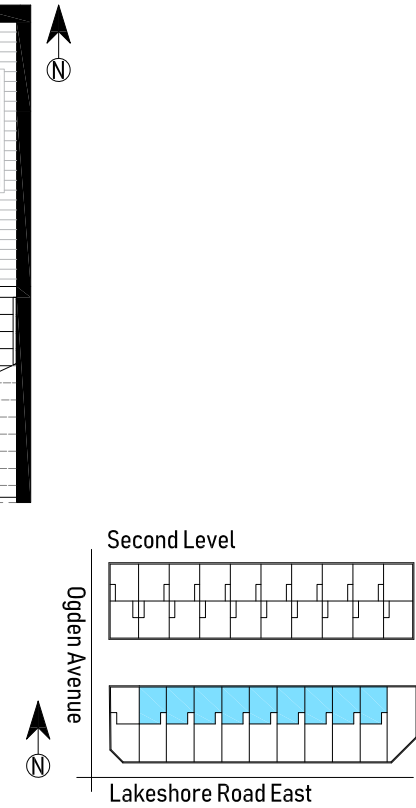
Rooftop Level



Second Level



Main Level



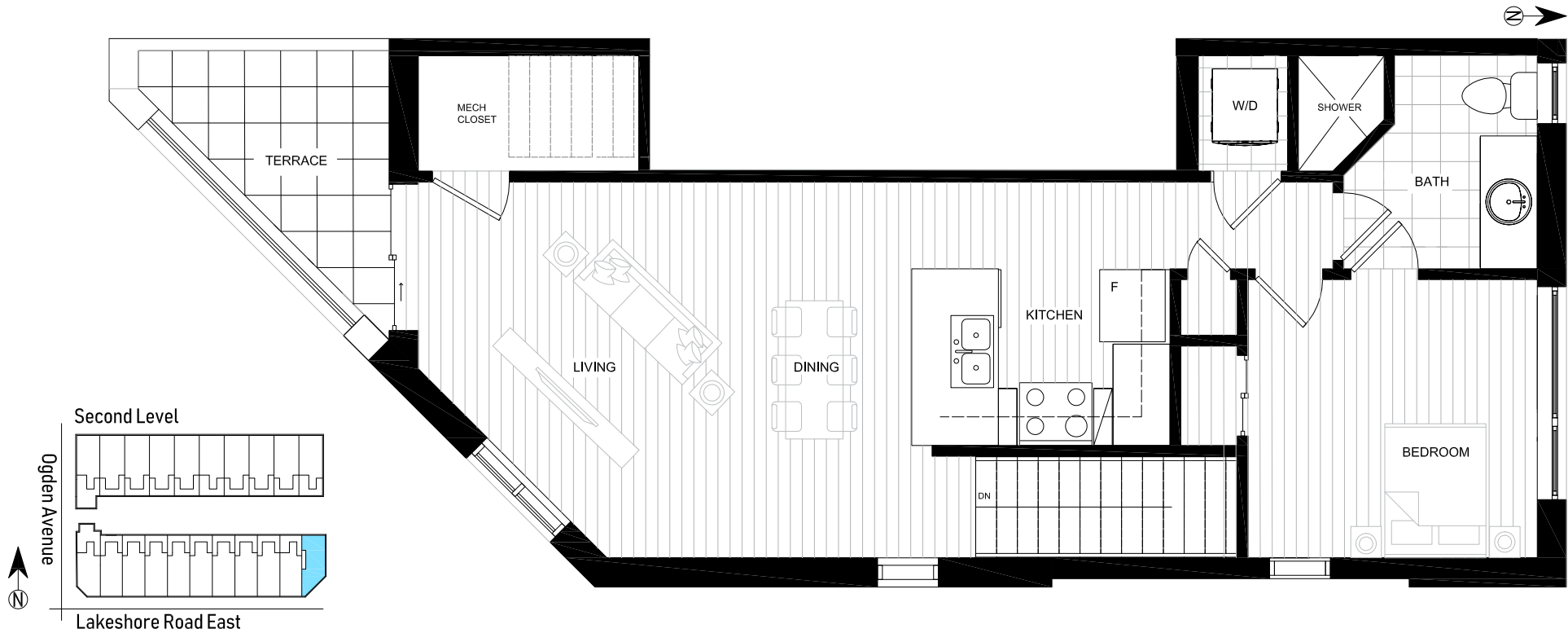
All sizes, dimensions and specifications are subject to change without notice. This plan is not to scale and is subject to architectural review and revision. In order to comply with building site conditions and municipal, structural, vendor and/or architectural requirements, actual living areas may vary from floor area stated. Floor area has been measured and may vary in accordance.

**B 321**

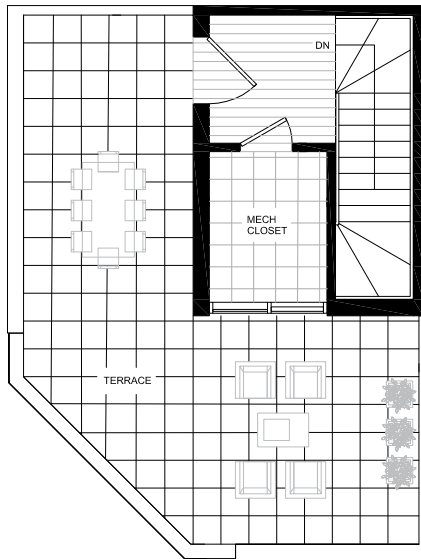
One Bedroom  
764 sqf

Plus 86 sqf balcony

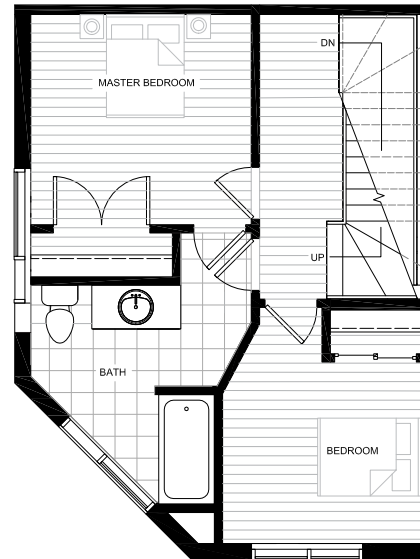
B



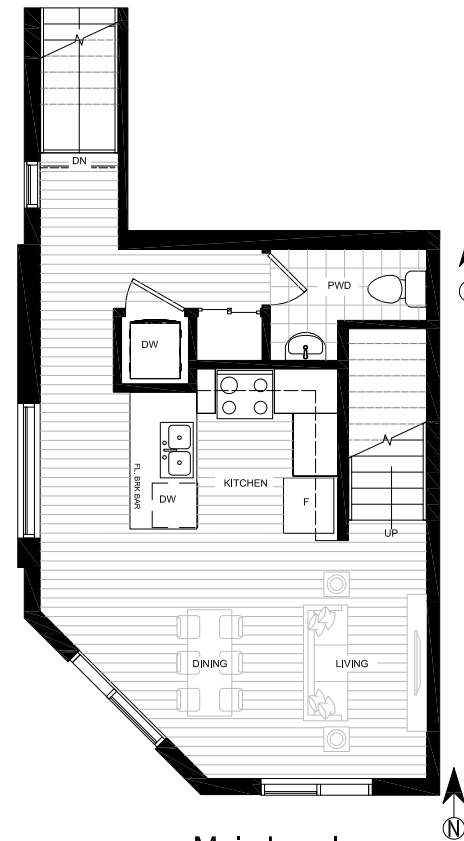
All sizes, dimensions and specifications are subject to change without notice. This plan is not to scale and is subject to architectural review and revision. In order to comply with building site conditions and municipal, structural, vendor and/or architectural requirements, actual living areas may vary from floor area stated. Floor area has been measured and may vary in accordance.



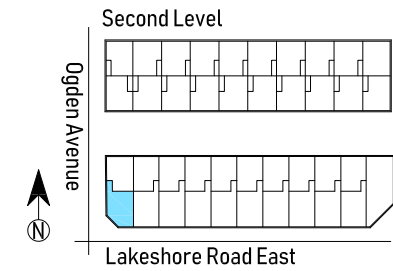
Rooftop Level



Second Level



Main Level



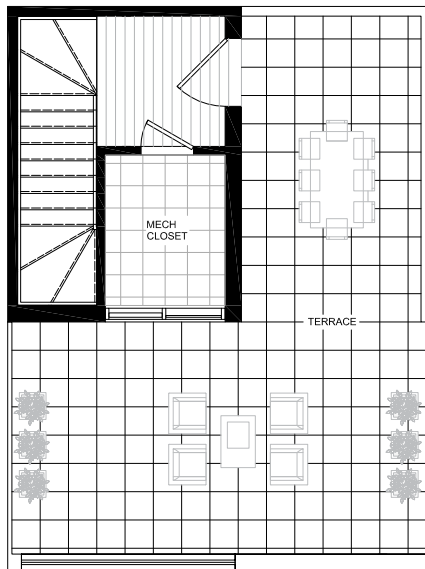
All sizes, dimensions and specifications are subject to change without notice. This plan is not to scale and is subject to architectural review and revision. In order to comply with building site conditions and municipal, structural, vendor and/or architectural requirements, actual living areas may vary from floor area stated. Floor area has been measured and may vary in accordance.

**B 303/306/307/310/311/314/315/318/319**

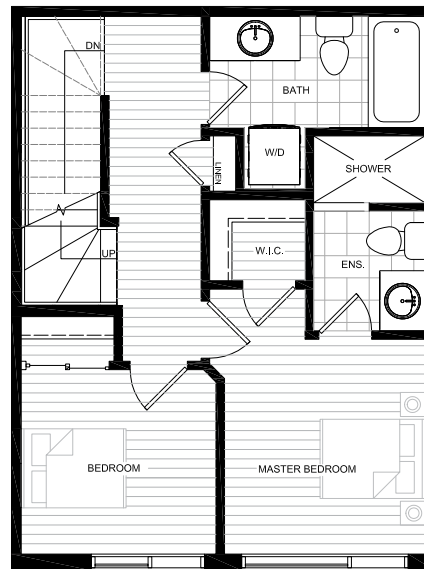
Two Bedroom  
1141 sqf

Plus 334 sqf rooftop terrace

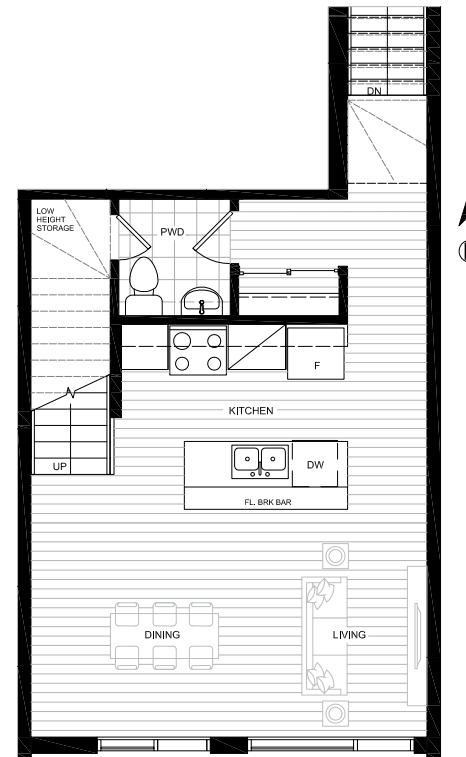
**B**



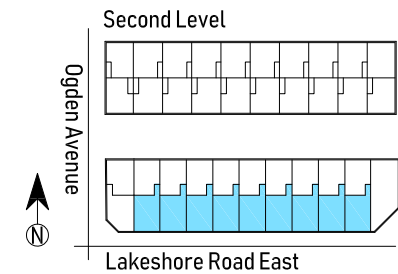
Rooftop Level



Second Level



Main Level



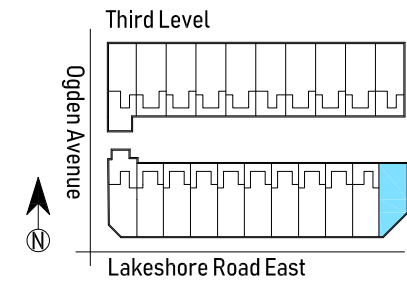
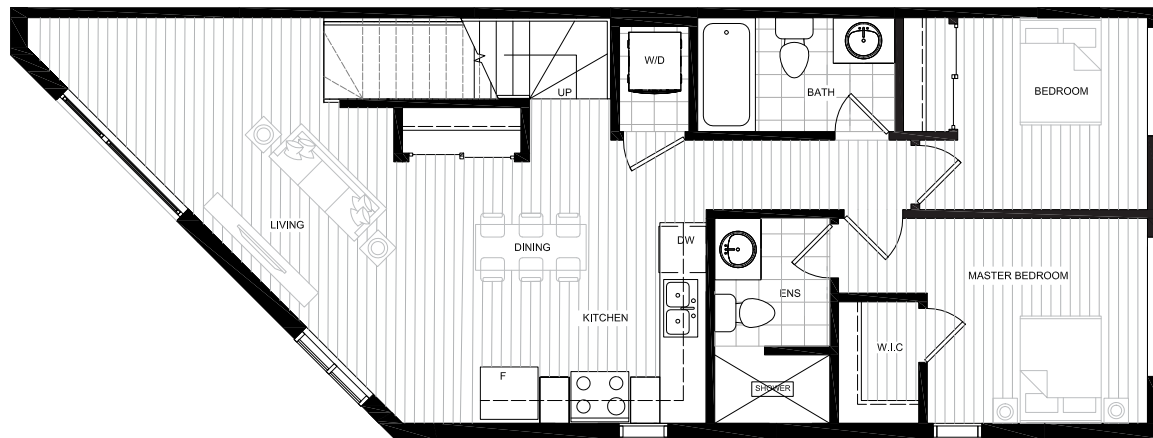
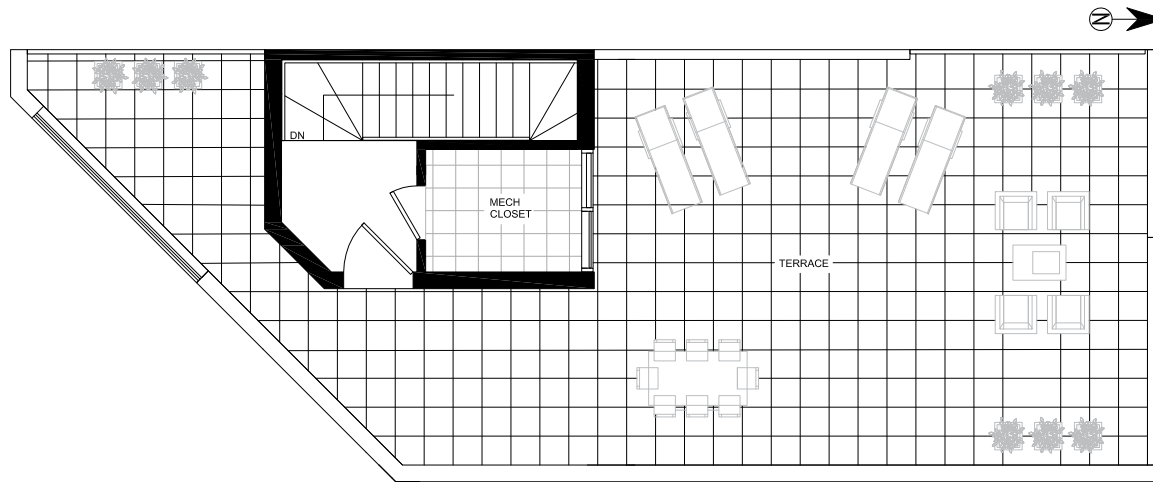
All sizes, dimensions and specifications are subject to change without notice. This plan is not to scale and is subject to architectural review and revision. In order to comply with building site conditions and municipal, structural, vendor and/or architectural requirements, actual living areas may vary from floor area stated. Floor area has been measured and may vary in accordance.

**B 322**

Two Bedroom  
947 sqf

Plus 667 sqf rooftop terrace

B



All sizes, dimensions and specifications are subject to change without notice. This plan is not to scale and is subject to architectural review and revision. In order to comply with building site conditions and municipal, structural, vendor and/or architectural requirements, actual living areas may vary from floor area stated. Floor area has been measured and may vary in accordance.

**FD2**

**FLOOR PLANS**



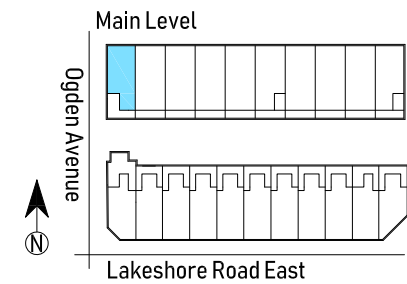


**B 112**

One Bedroom + Den  
**646 sqf**

Plus 118 sqf balcony

B



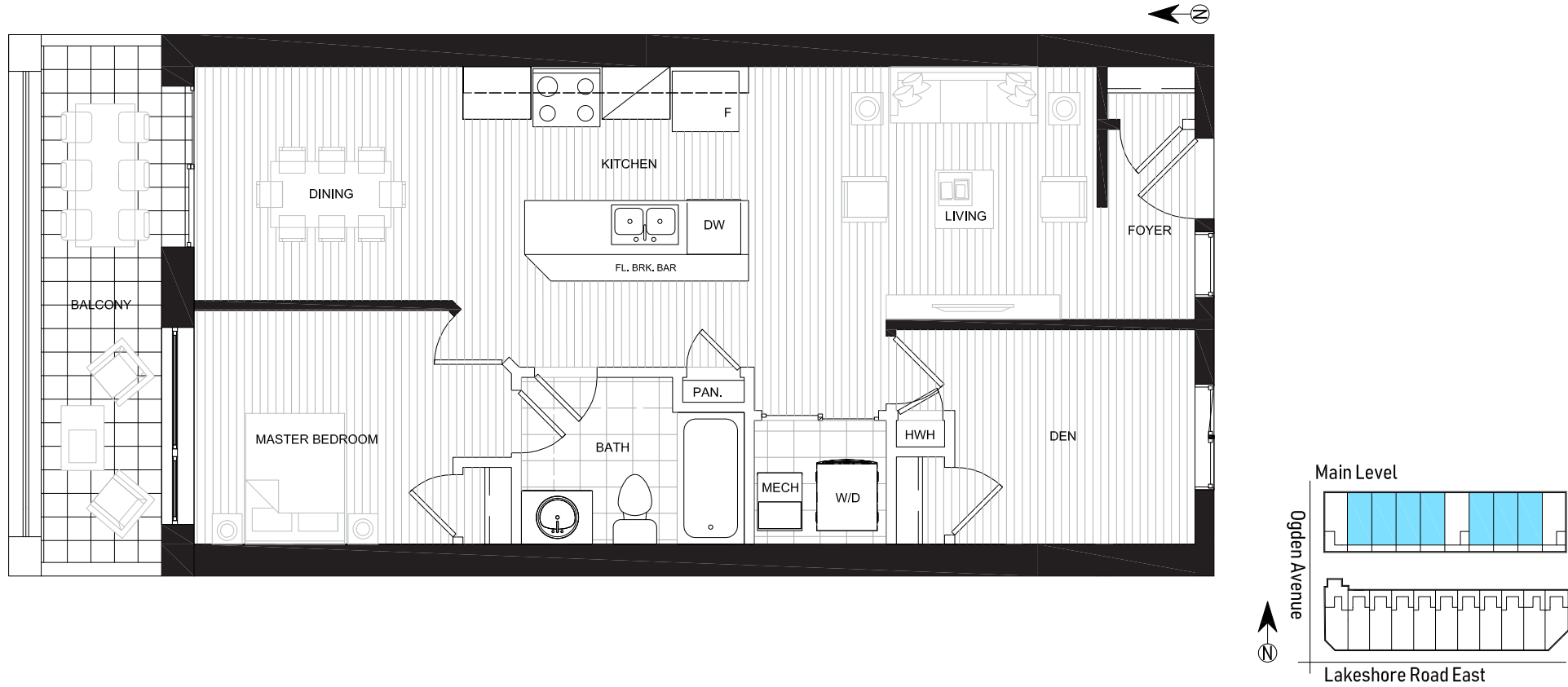
All sizes, dimensions and specifications are subject to change without notice. This plan is not to scale and is subject to architectural review and revision. In order to comply with building site conditions and municipal, structural, vendor and/or architectural requirements, actual living areas may vary from floor area stated. Floor area has been measured and may vary in accordance.

**B 113/114/115/116/118/119/120**

One Bedroom + Den  
**743 sqf**

Plus 118 sqf balcony

**B**



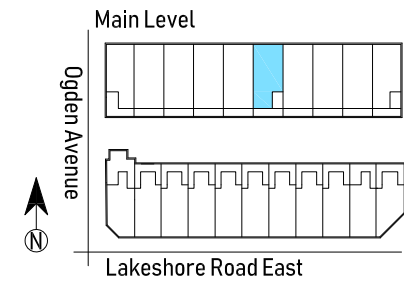
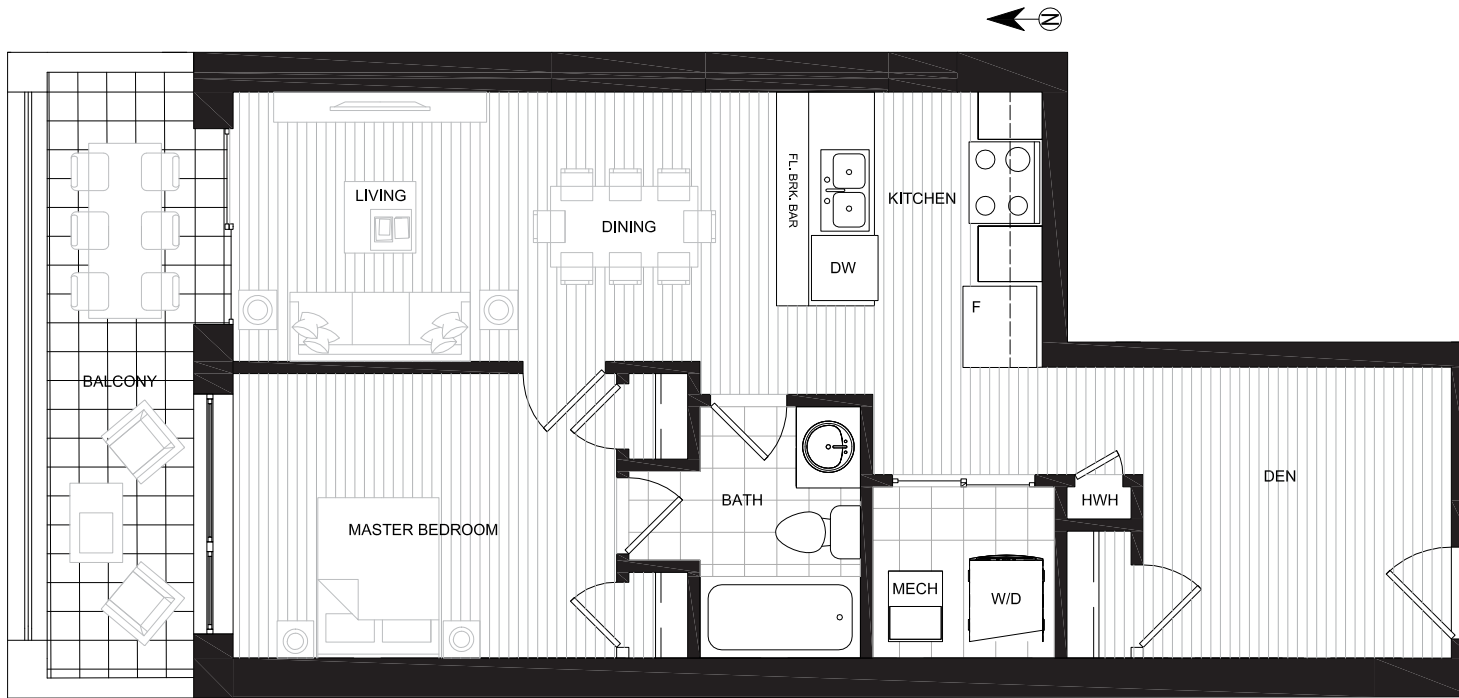
All sizes, dimensions and specifications are subject to change without notice. This plan is not to scale and is subject to architectural review and revision. In order to comply with building site conditions and municipal, structural, vendor and/or architectural requirements, actual living areas may vary from floor area stated. Floor area has been measured and may vary in accordance.

**B 117**

One Bedroom + Den  
**646 sqf**

Plus 118 sqf balcony

B



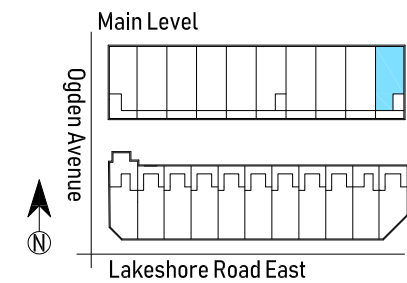
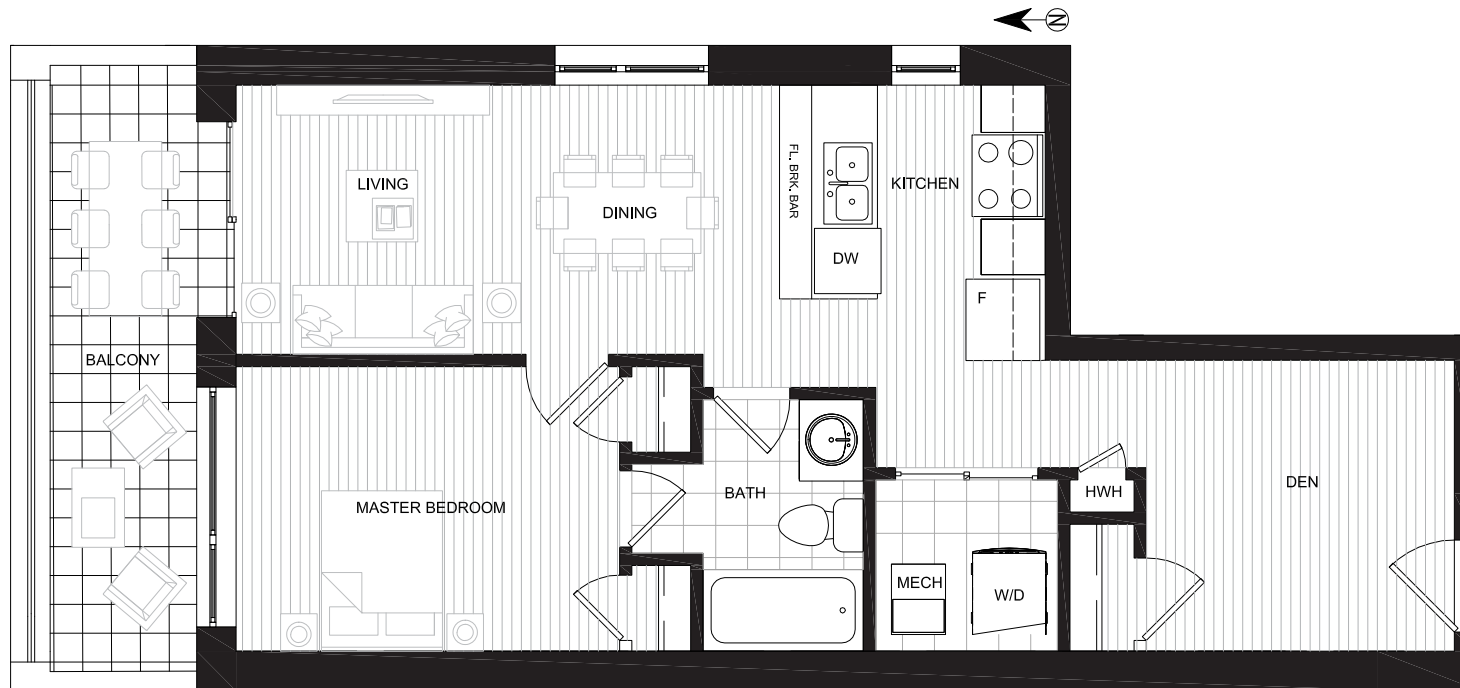
All sizes, dimensions and specifications are subject to change without notice. This plan is not to scale and is subject to architectural review and revision. In order to comply with building site conditions and municipal, structural, vendor and/or architectural requirements, actual living areas may vary from floor area stated. Floor area has been measured and may vary in accordance.

**B 121**

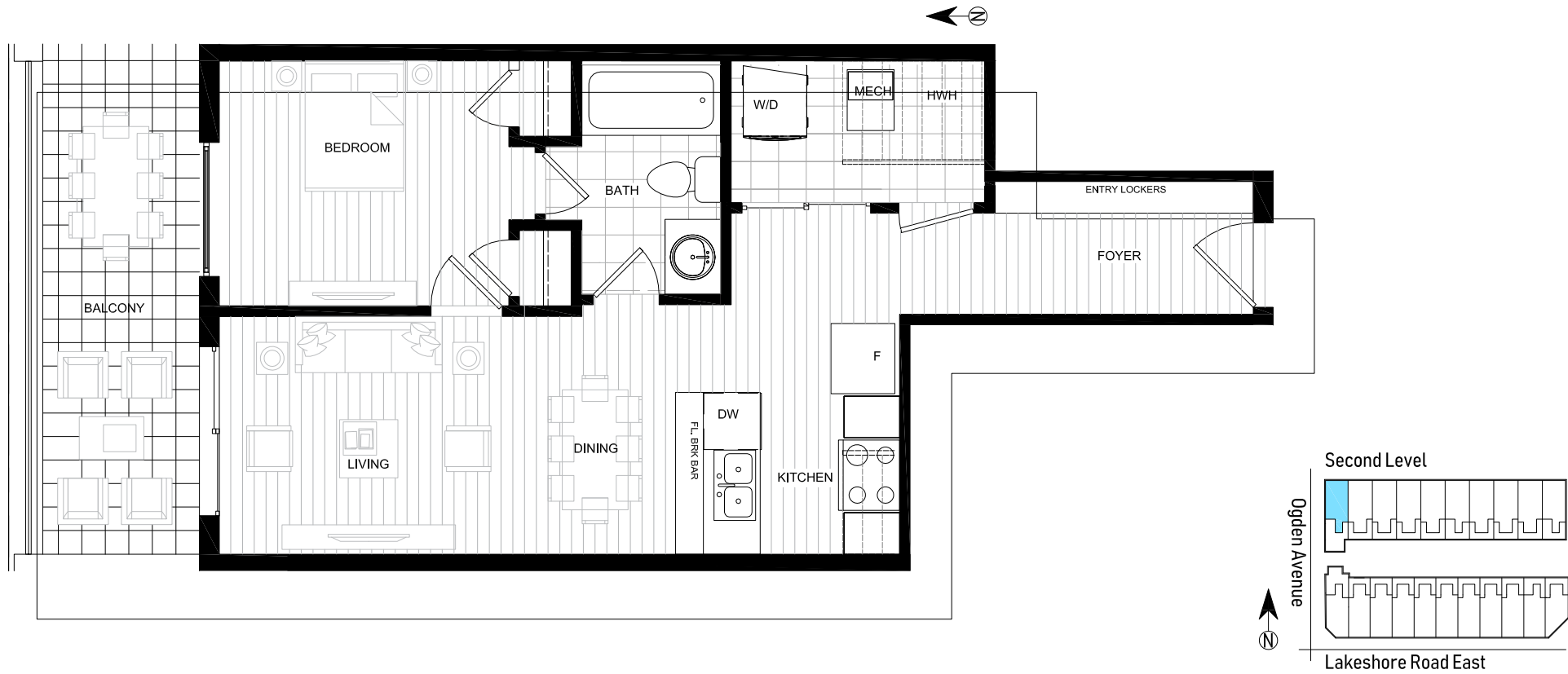
One Bedroom + Den  
**646 sqf**

Plus 118 sqf balcony

B



All sizes, dimensions and specifications are subject to change without notice. This plan is not to scale and is subject to architectural review and revision. In order to comply with building site conditions and municipal, structural, vendor and/or architectural requirements, actual living areas may vary from floor area stated. Floor area has been measured and may vary in accordance.



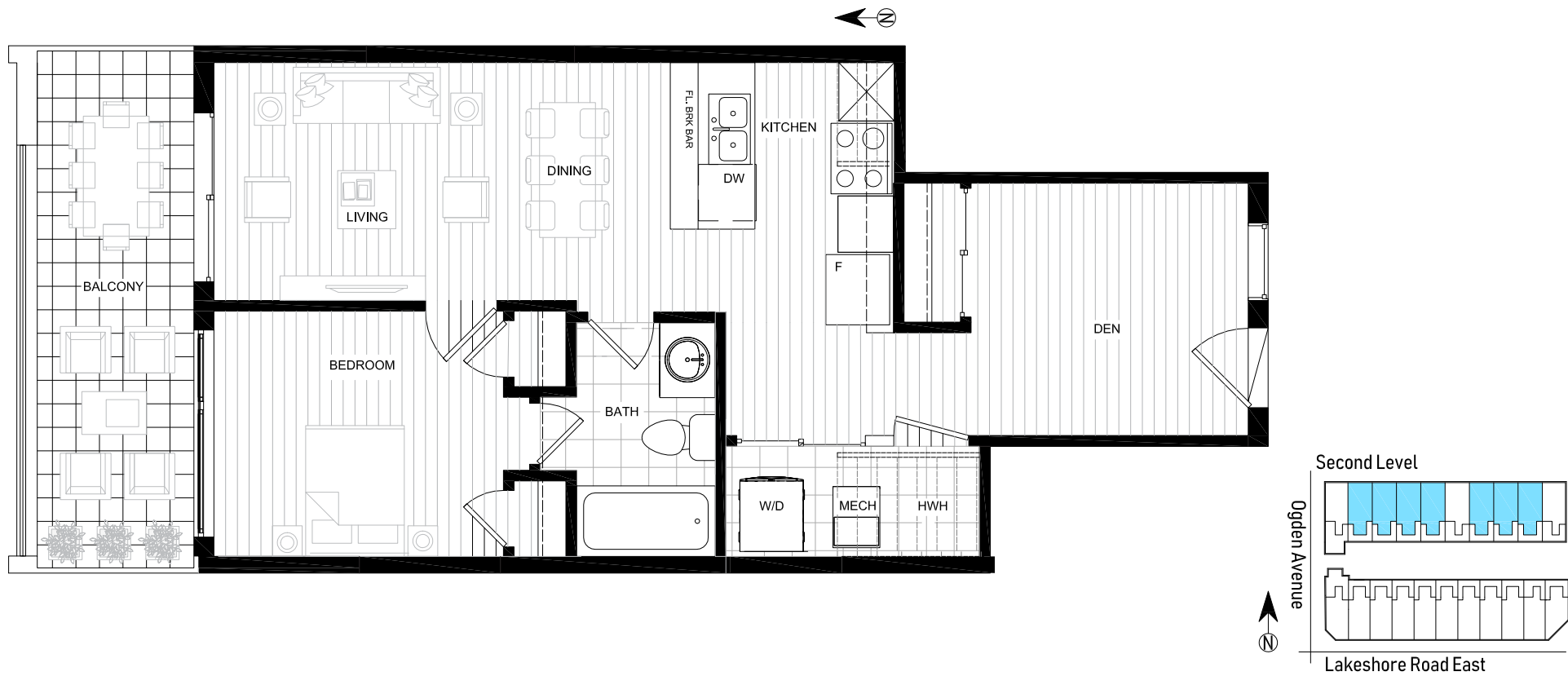
All sizes, dimensions and specifications are subject to change without notice. This plan is not to scale and is subject to architectural review and revision. In order to comply with building site conditions and municipal, structural, vendor and/or architectural requirements, actual living areas may vary from floor area stated. Floor area has been measured and may vary in accordance.

**B 213/214/215/216/218/219/220**

One Bedroom + Den  
**635 sqf**

Plus 108 sqf balcony

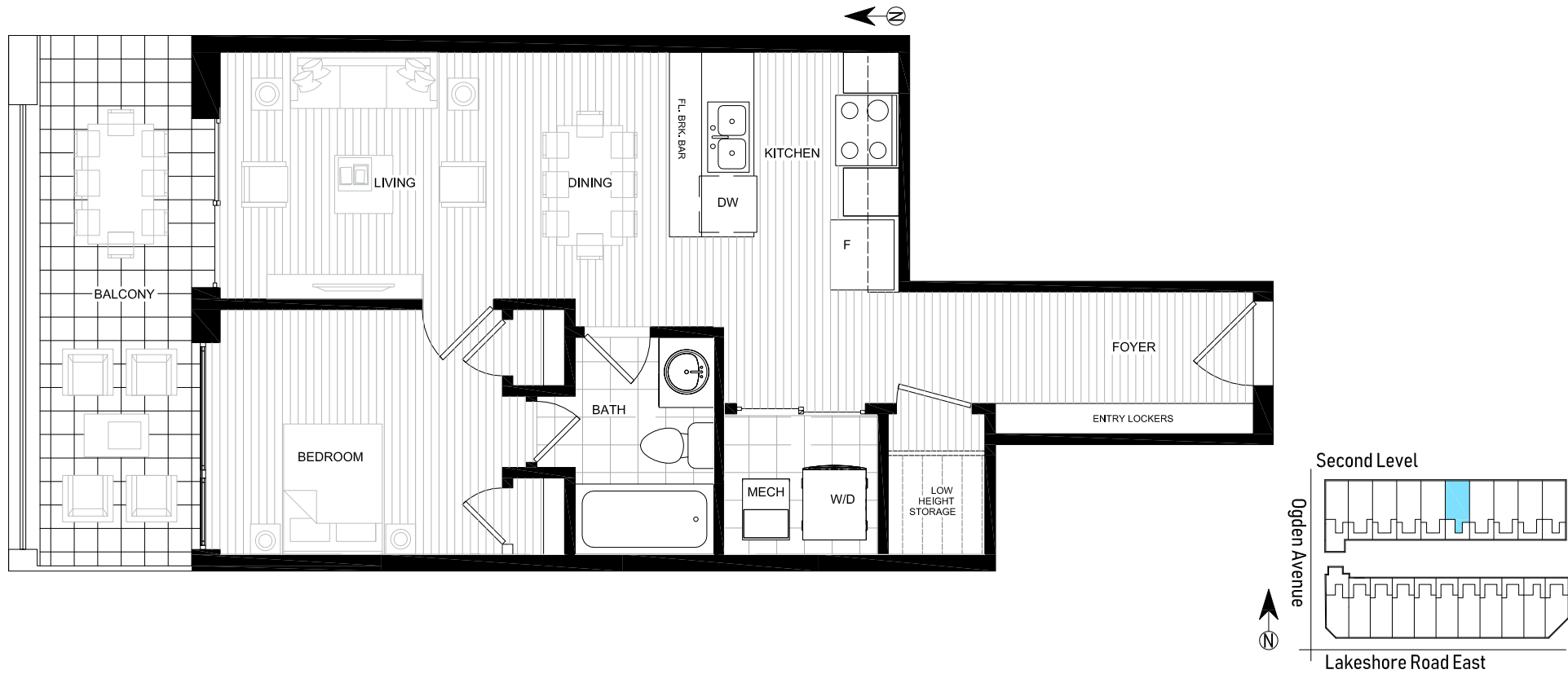
B



All sizes, dimensions and specifications are subject to change without notice. This plan is not to scale and is subject to architectural review and revision. In order to comply with building site conditions and municipal, structural, vendor and/or architectural requirements, actual living areas may vary from floor area stated. Floor area has been measured and may vary in accordance.

**B 217**  
One Bedroom  
**592 sqf**  
Plus 108 sqf balcony

**B**



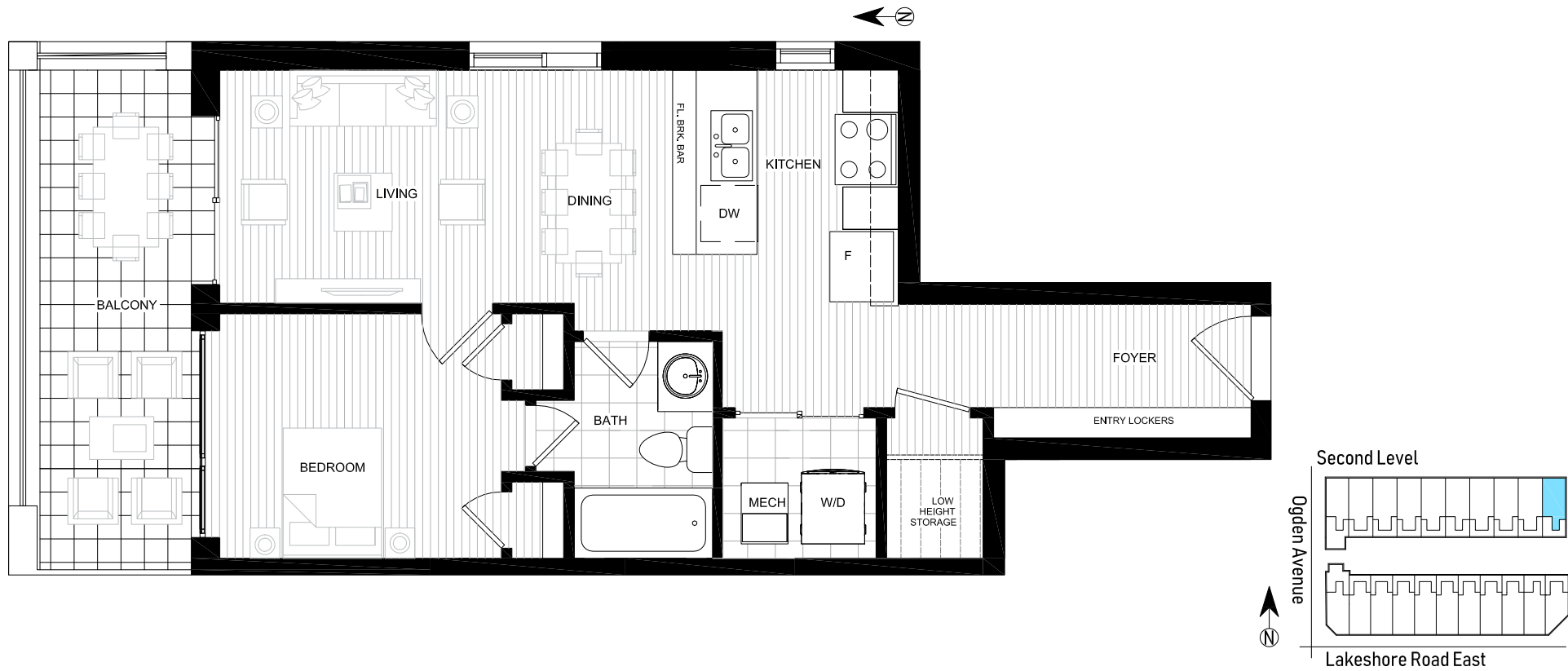
All sizes, dimensions and specifications are subject to change without notice. This plan is not to scale and is subject to architectural review and revision. In order to comply with building site conditions and municipal, structural, vendor and/or architectural requirements, actual living areas may vary from floor area stated. Floor area has been measured and may vary in accordance.

**B 221**

One Bedroom  
**592 sqf**

Plus 118 sqf balcony

B



All sizes, dimensions and specifications are subject to change without notice. This plan is not to scale and is subject to architectural review and revision. In order to comply with building site conditions and municipal, structural, vendor and/or architectural requirements, actual living areas may vary from floor area stated. Floor area has been measured and may vary in accordance.

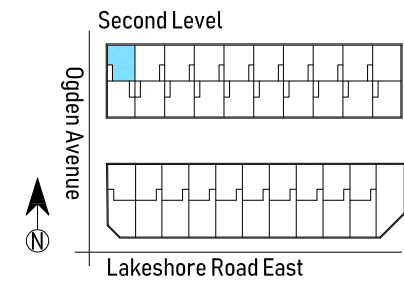
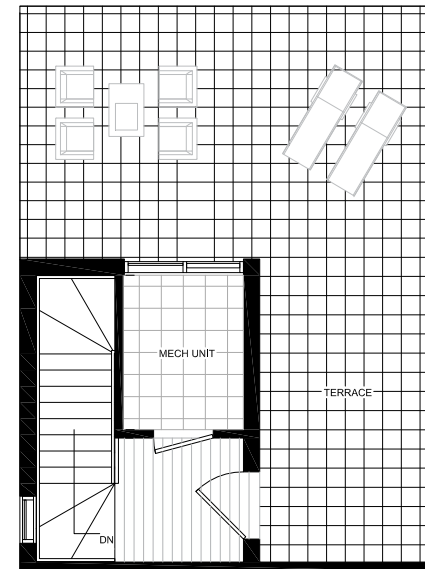
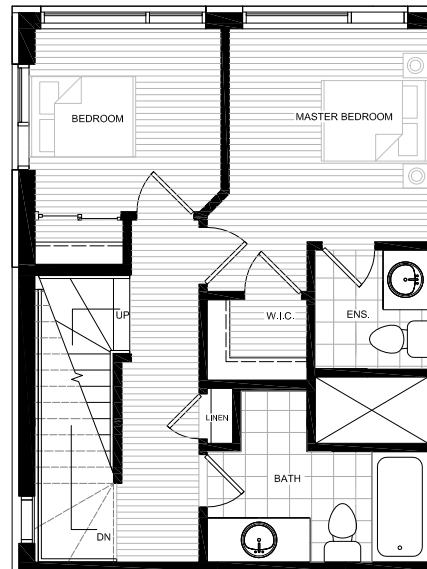
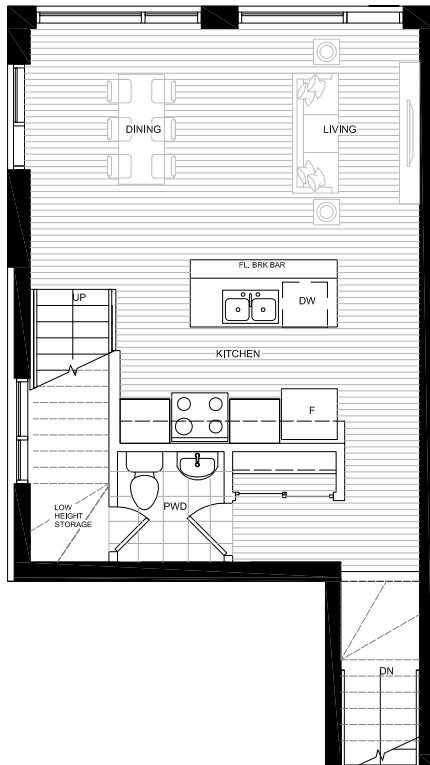


**B 323**

Two Bedroom  
1141 sqf

Plus 334 sqf rooftop terrace

B



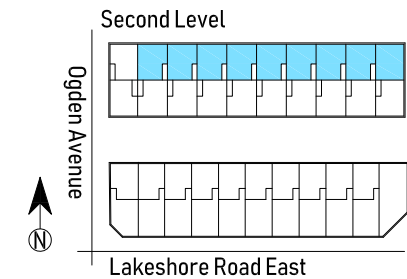
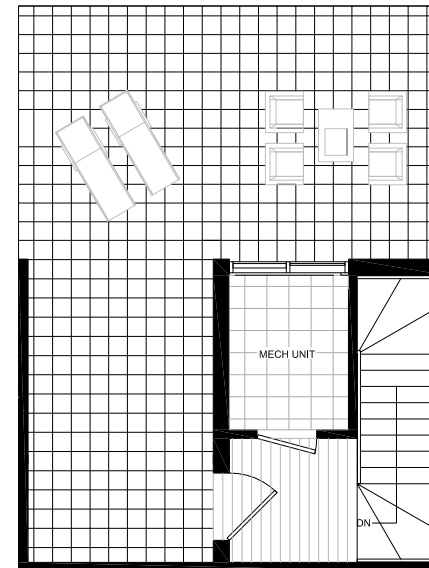
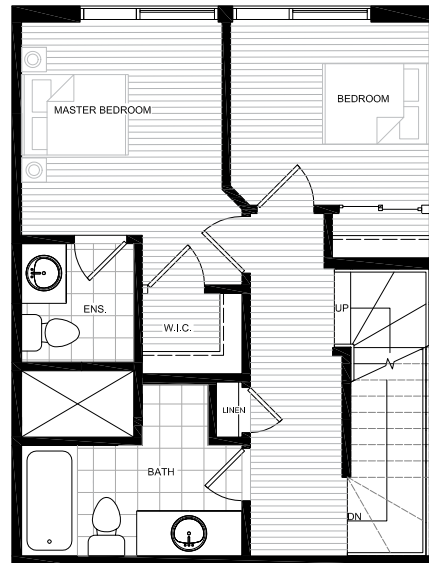
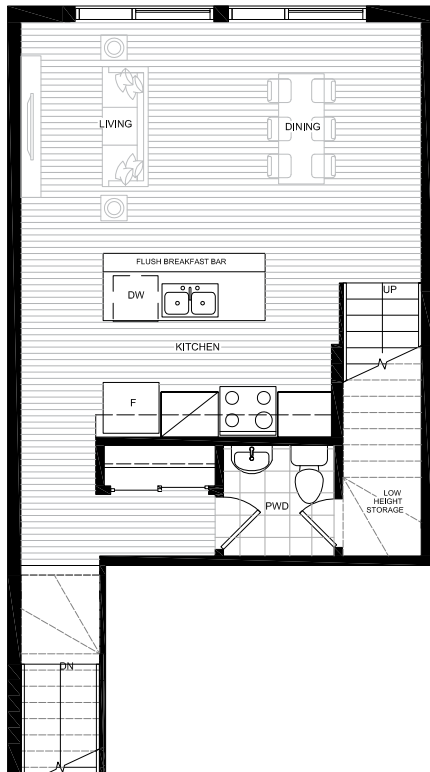
All sizes, dimensions and specifications are subject to change without notice. This plan is not to scale and is subject to architectural review and revision. In order to comply with building site conditions and municipal, structural, vendor and/or architectural requirements, actual living areas may vary from floor area stated. Floor area has been measured and may vary in accordance.

**B 326/327/330/331/334/335/338/339/342**

Two Bedroom  
**1141 sqf**

Plus 334 sqf rooftop terrace

**B**



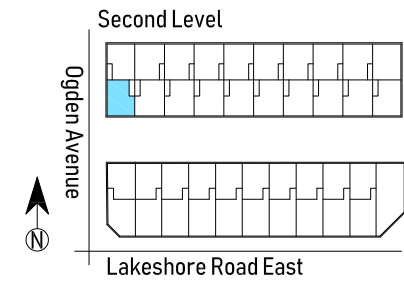
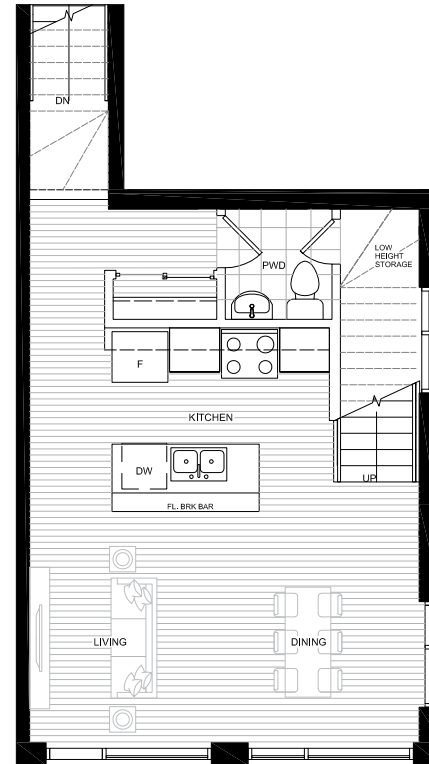
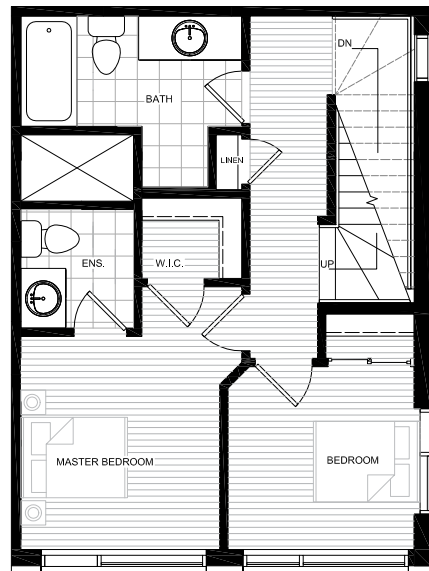
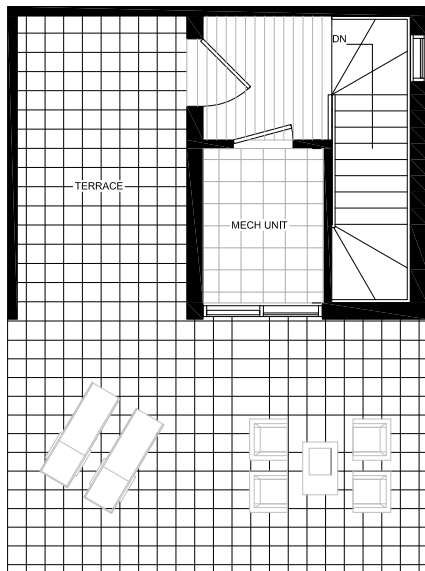
All sizes, dimensions and specifications are subject to change without notice. This plan is not to scale and is subject to architectural review and revision. In order to comply with building site conditions and municipal, structural, vendor and/or architectural requirements, actual living areas may vary from floor area stated. Floor area has been measured and may vary in accordance.

**B 324**

Two Bedroom  
1141 sqf

Plus 334 sqf rooftop terrace

B



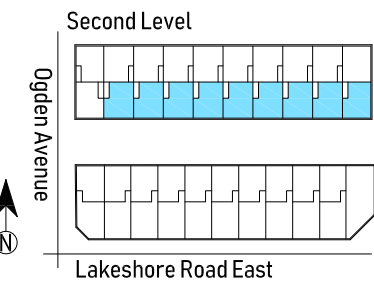
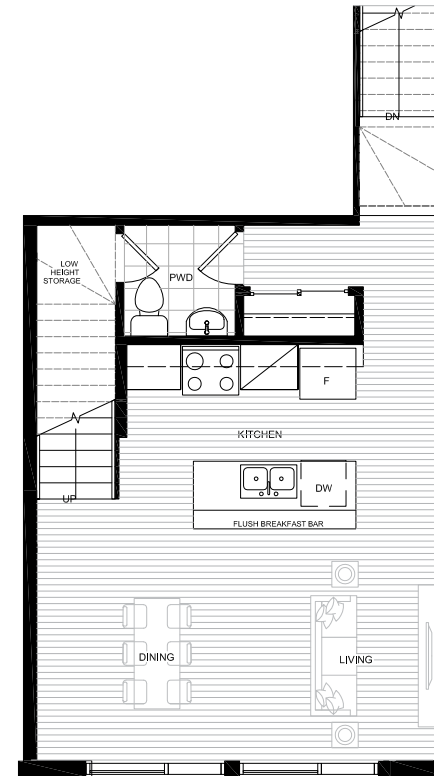
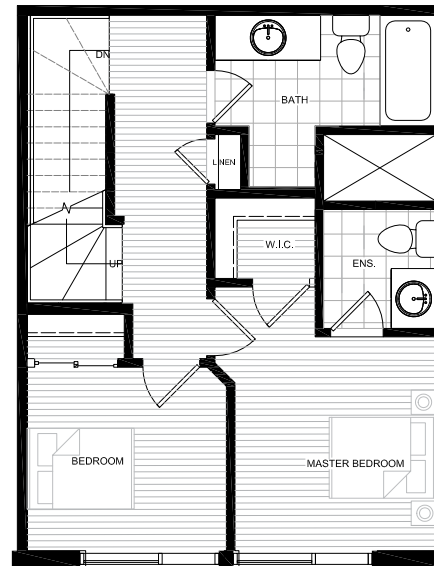
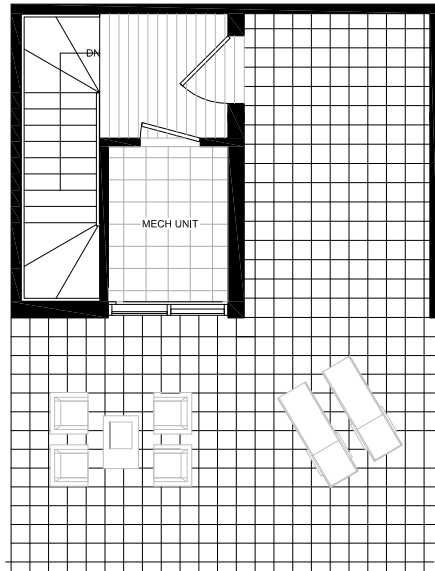
All sizes, dimensions and specifications are subject to change without notice. This plan is not to scale and is subject to architectural review and revision. In order to comply with building site conditions and municipal, structural, vendor and/or architectural requirements, actual living areas may vary from floor area stated. Floor area has been measured and may vary in accordance.

**B 325/328/329/332/333/336/337/340/341**

Two Bedroom  
1141 sqf

Plus 334 sqf rooftop terrace

B



All sizes, dimensions and specifications are subject to change without notice. This plan is not to scale and is subject to architectural review and revision. In order to comply with building site conditions and municipal, structural, vendor and/or architectural requirements, actual living areas may vary from floor area stated. Floor area has been measured and may vary in accordance.



ANTHEM

# BOOTH.

---

## **BOOTH DEVELOPMENTS**

is committed to developing unique communities that evoke a modern sensibility that seamlessly blends into their existing neighbourhoods. Their forward thinking approach to design, combined with their contemporary aspirations ensure that each project incorporates the latest trends in architectural design, from bold exteriors to refined interiors. Booth developments is committed to offering each client the highest level of value with an uncompromising eye for detail and quality craftsmanship. They believe their projects should be built to last the test of time and bring genuine and positive growth to each community they become a part of.



**SAM MCDADI**  
REAL ESTATE INC BROKERAGE

---

## **SAM MCDADI REAL ESTATE INC., BROKERAGE**

With 30 years of Mississauga real estate experience and experience in the GTA, the knowledge, experience and insights we have are invaluable. As a reputable Mississauga real estate agent, we have been involved in more than 12,076 home real estate sales in the GTA. Our motto at Team McDadi is no home is too big or too small for us. Our aim is to provide each client with the ultimate real estate experience. Whether you are interested in buying or selling a condo, townhome, single detached home or an estate mansion, we have the tools and experience to ensure a smooth and seamless real estate transaction. Our record speaks volumes. Our reputation speaks volumes.





**905. 502. 1500** | **McDADI.COM**

**NORTH MISSISSAUGA**

5805 Whittle Road, Suite 110, Mississauga, ON L4Z 2J1  
PHONE: 905. 502. 1500

**SOUTH MISSISSAUGA**

1034 Clarkson Road N. Mississauga, ON L5J 2V9  
PHONE: 905. 823-1500

**OAKVILLE**

78 Lakeshore Road W. Oakville, ON L6K 1E1  
PHONE: 905 845. 1500

**MILTON**

1264 Main Street E. Milton, ON L9T 6H7  
PHONE: 905. 876. 1300

**BOOTH.**