

ASSIGNMENT SALE

Brown St
Erin



See this
property online
Scan the QR code
with your phone's camera



SAM McDADI
REAL ESTATE BROKERAGE



*Images are for illustrative purposes only. Photos of actual unit not yet available.

WELCOME

The Erin Glen Community by Solmar offers an exceptional living experience in the charming town of Erin, ON. Located on Brown St, Erin, this 1,657 sq ft townhouse (The Terra Cotta, Elevation C) features 3 bedrooms and 2.5 bathrooms, making it perfect for families seeking both space and comfort.

Erin Glen Community is designed with family living in mind, providing easy access to local amenities, schools, and parks. The area's natural beauty, combined with modern conveniences, makes it an ideal location for those looking to enjoy a balanced lifestyle. With contemporary finishes and a spacious layout, this townhome offers the perfect setting for your next chapter—reach out today to learn more about this exciting opportunity in the Erin Glen Community.

Closing/Occupancy: Nov 14, 2024



*Images are for illustrative purposes only



*Images are for illustrative purposes only



*Images are for illustrative purposes only



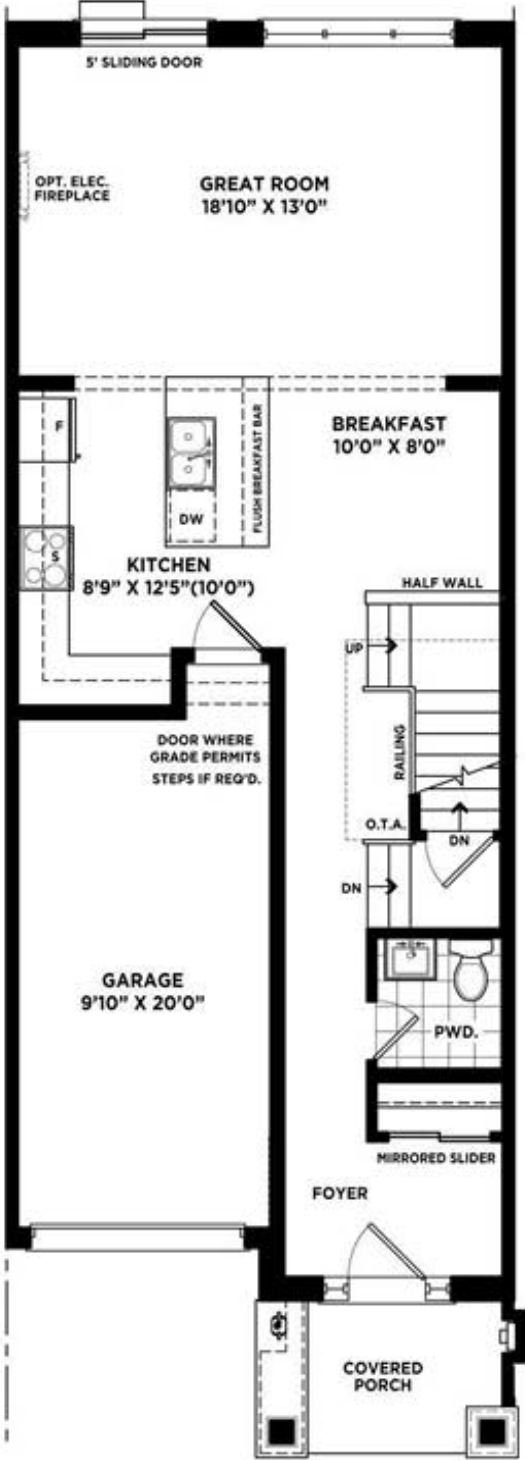
*Images are for illustrative purposes only



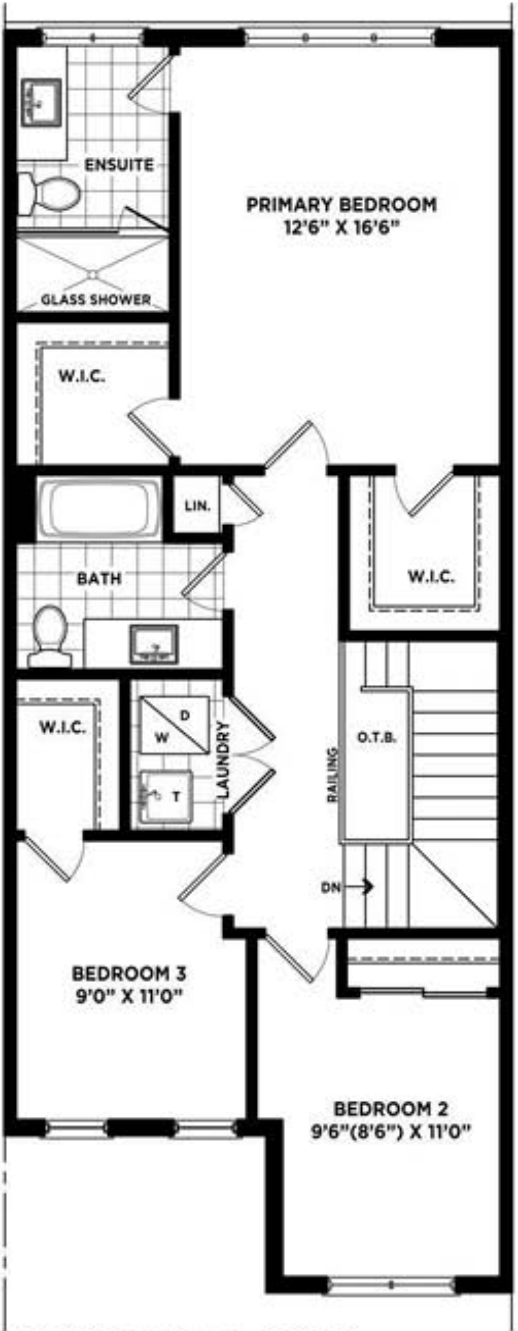
*Images are for illustrative purposes only

FLOOR PLAN

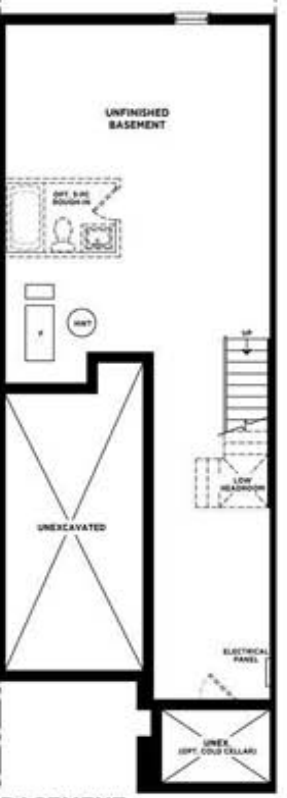
1,657 sq ft
 3 beds
 2.5 bath



GROUND FLOOR
 ELEV. A, B & C



SECOND FLOOR
 ELEV. A



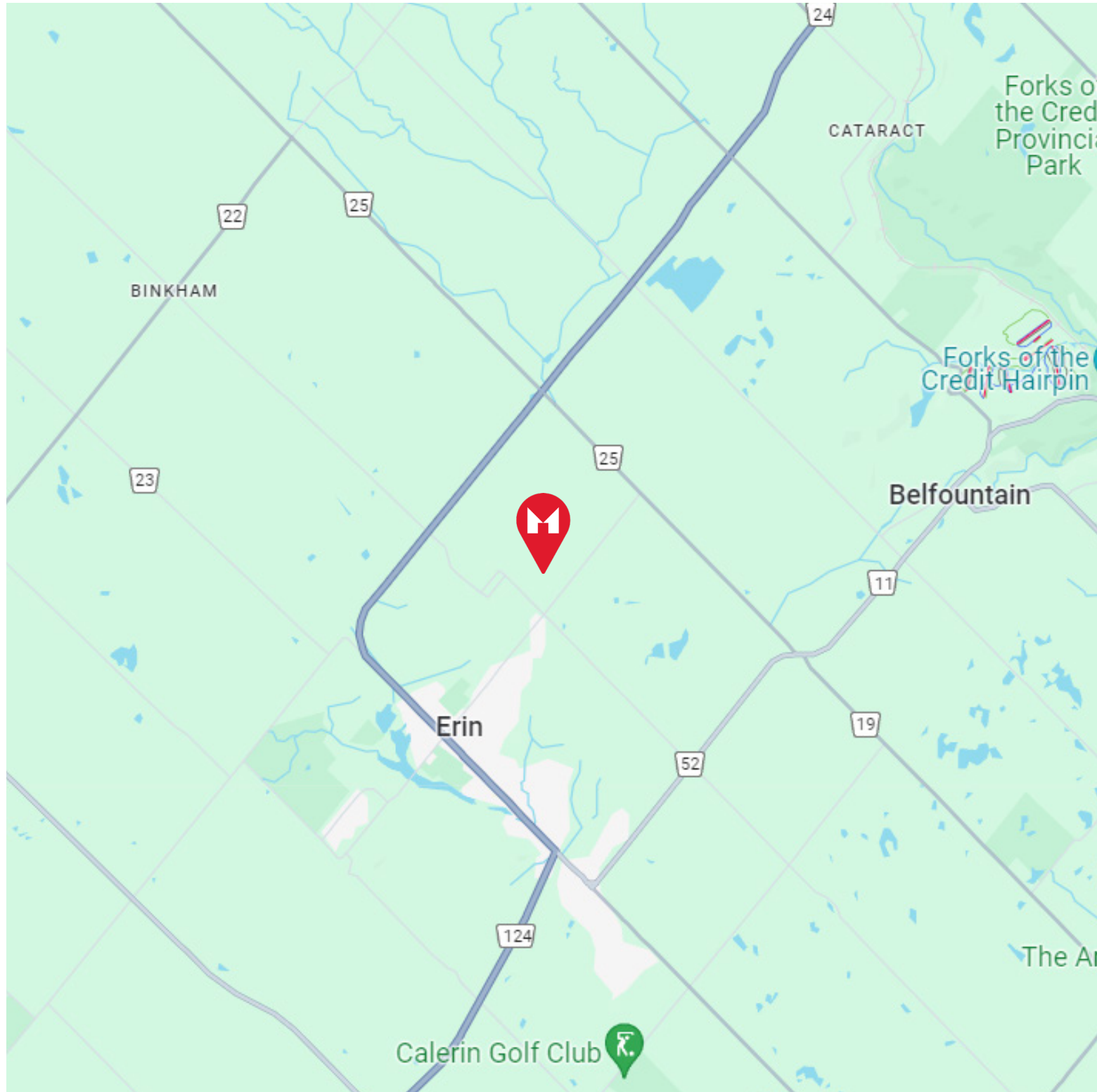
BASEMENT
 ELEV. A, B & C



PART. SECOND FLOOR
 ELEV. B



PART. SECOND FLOOR
 ELEV. C



Schools

Erin Public School
185 Daniel St, Erin

Belfountain Public School
17247 Shaws Creek Rd, Belfountain

Alton Public School
19657 Main St, Alton

Brisbane Public School
9426 Wellington Rd 124, Erin

Erin District HighSchool
14 Boland Dr, Erin

Humber College
275 Alder St 2nd Floor, Orangeville

Amenities

RBC Royal Bank
152 Main St, New Dundee

TD Canada Trust
125 Main St, Erin

Esso Gas Station
1521 Charleston Sideroad, Caledon

LemonTree Products
32 Pioneer Dr #2, Erin

Foodland
102 Trafalgar Rd, Hillsburgh

Erin Heights Golf Course
9515 Sideroad 17, Erin

Erin Fitness
5399 Wellington Rd 52, Erin

Centre 2000, Erin Community Centre & Arena
14 Boland Dr, Erin

Rexall
123 Main St, Erin

Guelph General Hospital
115 Delhi St, Guelph

LCBO
41 Main St, Erin

Tim Hortons
4 Thompson Crescent, Erin

Westside Market Village
200-250 Centennial Rd, Orangeville

Riverside Park
12 Church Blvd Unit 4, Erin

Belfountain Conservation Area
819 Forks of the Credit Rd, Caledon

Thank you for visiting

For more photos visit: listings.mcdadi.com

All information displayed within this catalogue is believed to be accurate but is not guaranteed and should be independently verified. No warranties or representations are made of any kind.

When you choose Team McDadi, **you help**

Team McDadi is a proud supporter of numerous charitable organizations, sports programs and community events

- ▶ Clarkson Christmas in the Village
- ▶ Clarkson Halloween in the Village
- ▶ Erindale Little League Tennis Canada
- ▶ Family Jingle and Mingle
- ▶ Heartland Dragons Minor Hockey Association
- ▶ Hoops for Her
- ▶ Mississauga Girls Hockey League
- ▶ Mississauga Santa Claus Parade
- ▶ Port Credit Buskerfest
- ▶ Princess Margaret Hospital Association
- ▶ Port Credit Skating Club
- ▶ Sick Kids
- ▶ Rouge Valley Health System Foundation and Club
- ▶ The Art of Giving
- ▶ Schizophrenia Society of Ontario
- ▶ Tennis Canada
- ▶ The Compass Food Bank
- ▶ The Mississauga Food Bank
- ▶ The Mississauga Tigers



Sam McDadi Real Estate Brokerage **is proud to donate a portion of each sale to the**

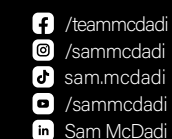


In 2018, Team McDadi donated \$250,000 to Trillium Health Partners Foundation.
In 2020, we increased our pledge to donate \$1,000,000.



**Official Real Estate Brokerage
of the Toronto Raptors**

Sam McDadi BSc, M.B.A. Sales Representative.



Mississauga 5805 Whittle Rd #110	905 502 1500
N. Mississauga 1034 Clarkson Rd	905 823 1500
Milton 1264 Main St E.	905 876 1300
Oakville 78 Lakeshore Rd W.	905 845 1500
Toronto 3311 Yonge St	416 544 1500
Burlington 3-4130 Fairview Street	905 333 1100
Hamilton 110-442 Millen Rd	905 664 5100