

ASSIGNMENT SALE

Charles St E
Whitby



See this
property online
Scan the QR code
with your phone's camera



SAM McDADI
REAL ESTATE BROKERAGE



*Images are for illustrative purposes only. Photos of actual unit not yet available.

WELCOME

The Landing Condos at Whitby Harbour offers a prime living experience on Charles Street E in the heart of Whitby. Developed by Carttera, this 2B model features 816 sq ft of interior space plus an 80 sq ft balcony, bringing the total living area to nearly 900 sq ft. This 2-bedroom, 2-bathroom condo includes 1 parking space and is designed with contemporary living in mind, offering modern finishes and a layout that maximizes comfort and functionality.

Located in a vibrant community, this development provides easy access to the waterfront, parks, and an array of local amenities. The Landing Condos is also conveniently close to major transit routes, ensuring seamless commutes to surrounding areas. This is a unique opportunity to own a modern condo in one of Whitby's most desirable waterfront communities. Contact us today for more information.

Closing/Occupancy: Aug 23, 2024



*Images are for illustrative purposes only



*Images are for illustrative purposes only





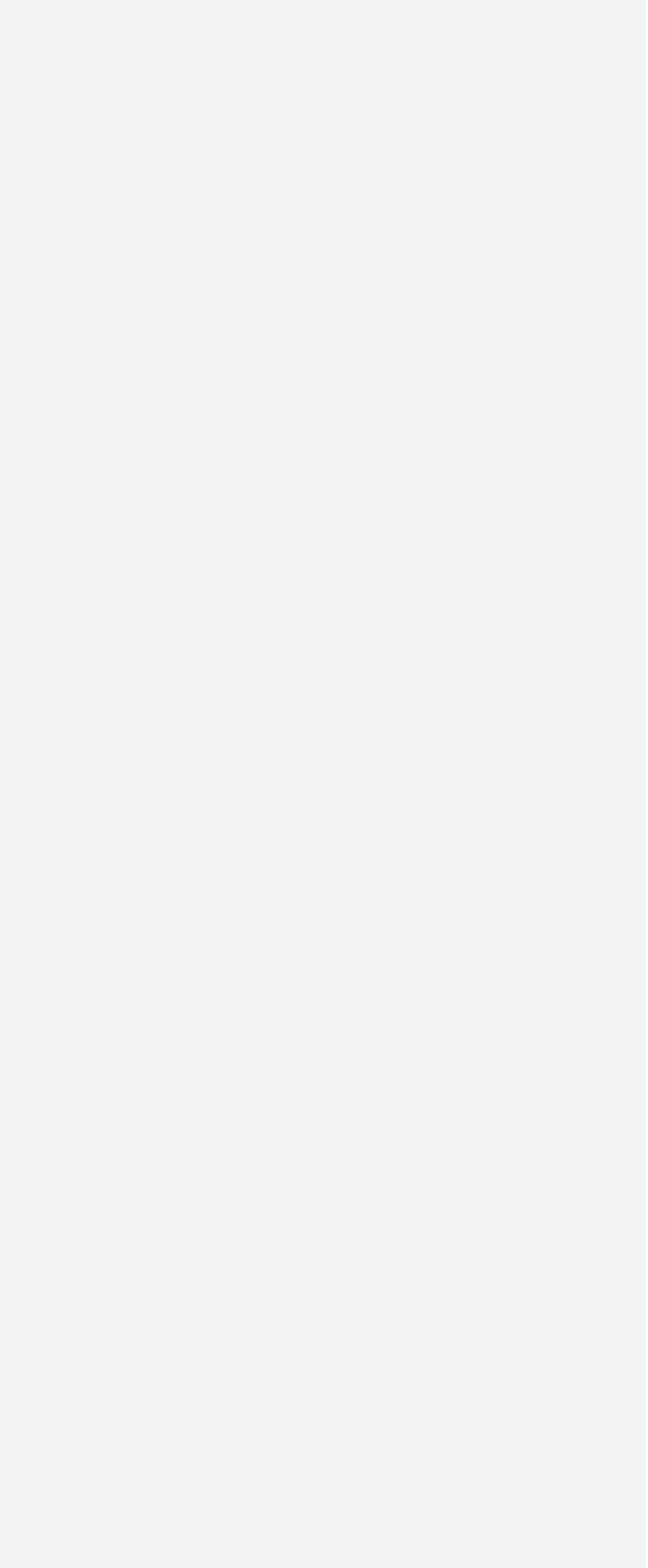
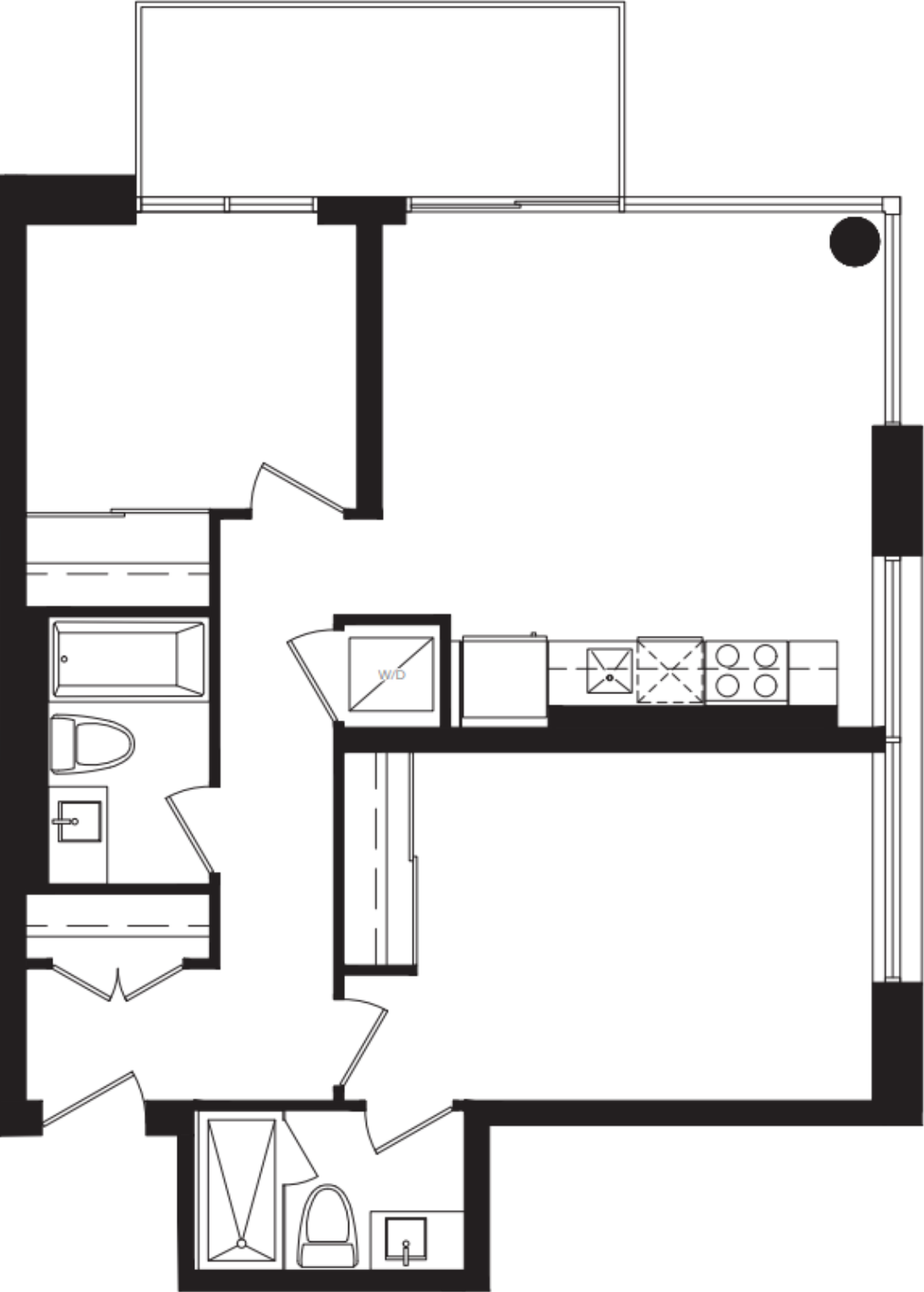
*Images are for illustrative purposes only

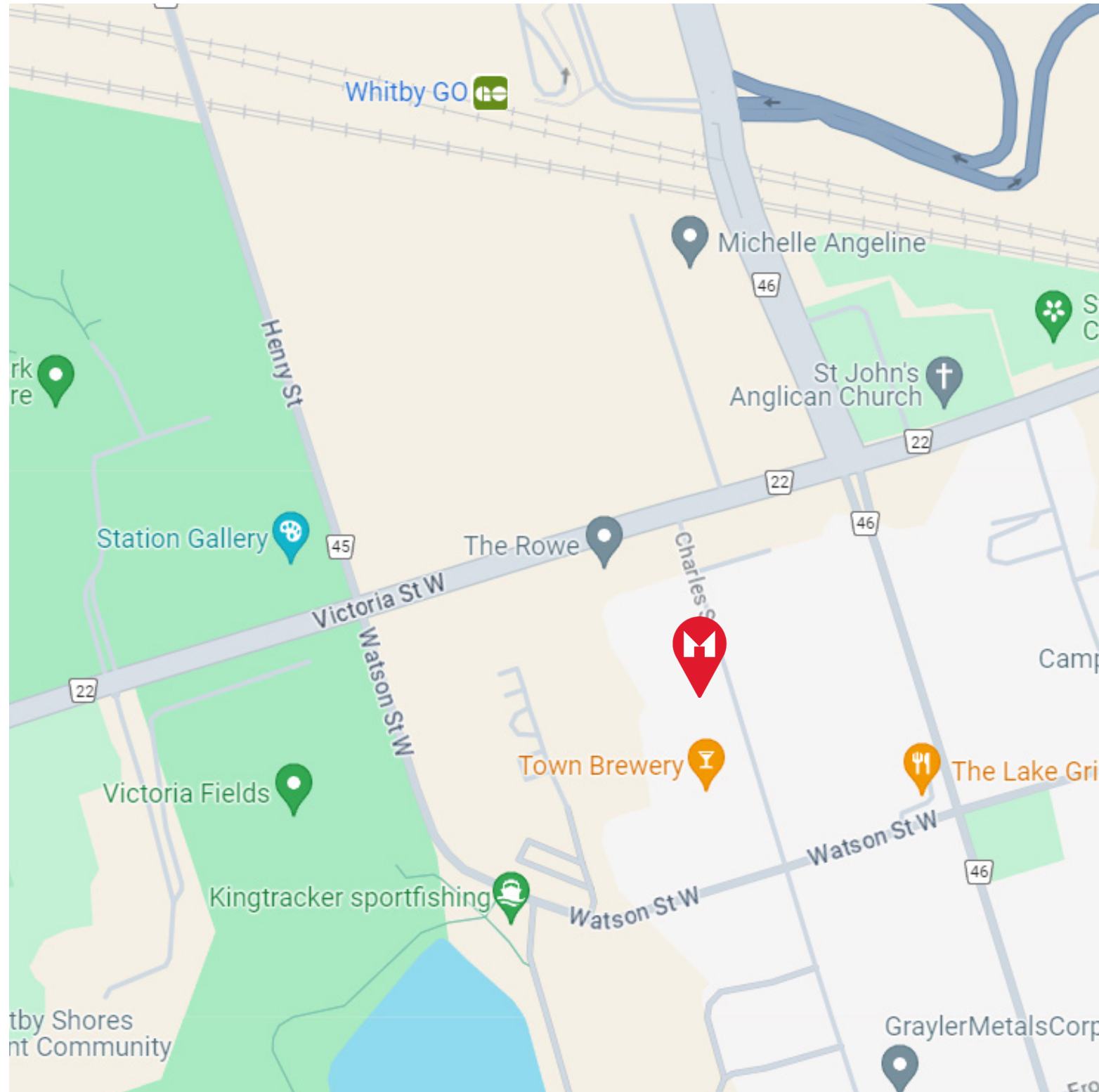


*Images are for illustrative purposes only

FLOOR PLAN

Total 896 sq ft
816 sq ft interior + 80 sq ft balcony
2 bedrooms
2 bathrooms
1 parking





Schools

Whitby Shores Public School
485 Whitby Shores Greenway, Whitby

West Lynde Public School
270 Michael Blvd, Whitby

Sir William Stephenson Public School
1125 Athol St, Whitby

Julie Payette Public School
300 Garden St, Whitby

Authentic Montessori Academy
508 Brock St S, Whitby

Durham College
1610 Champlain Ave, Whitby

Amenities

RBC Royal Bank
1610 Champlain Ave, Whitby

TD Canada Trust
404 Dundas St W, Whitby

Petro-Canada Gas Station
700 Victoria St W, Whitby

Metro
619 Victoria St W, Whitby

FreshCo
350 Brock St S, Whitby

South Ajax Golf Club
650 Lake Ridge Road S, Ajax

GoodLife Fitness
75 Consumers Dr, Whitby

Ajax Community Centre
75 Centennial Rd, Ajax

Shoppers Drug Mart
368 Brock St S, Whitby

Lakeridge Health Ajax Pickering Hospital
580 Harwood Ave S, Ajax

LCBO
629 Victoria St W, Whitby

Starbucks
25 Consumers Dr, Whitby

Whitby GO
1350 Brock St S, Whitby

Port Whitby Marina
301 Watson St W, Whitby

Kiwanis Heydenshore Park
589 Water St, Whitby

Thank you for visiting

For more photos visit: listings.mcdadi.com

All information displayed within this catalogue is believed to be accurate but is not guaranteed and should be independently verified. No warranties or representations are made of any kind.

When you choose Team McDadi, **you help**

Team McDadi is a proud supporter of numerous charitable organizations, sports programs and community events

- ▶ Clarkson Christmas in the Village
- ▶ Clarkson Halloween in the Village
- ▶ Erindale Little League Tennis Canada
- ▶ Family Jingle and Mingle
- ▶ Heartland Dragons Minor Hockey Association
- ▶ Hoops for Her
- ▶ Mississauga Girls Hockey League
- ▶ Mississauga Santa Claus Parade
- ▶ Port Credit Buskerfest
- ▶ Princess Margaret Hospital Association
- ▶ Port Credit Skating Club
- ▶ Sick Kids
- ▶ Rouge Valley Health System Foundation and Club
- ▶ The Art of Giving
- ▶ Schizophrenia Society of Ontario
- ▶ Tennis Canada
- ▶ The Compass Food Bank
- ▶ The Mississauga Food Bank
- ▶ The Mississauga Tigers



Sam McDadi Real Estate Brokerage **is proud to donate a portion of each sale to the**

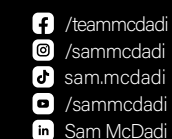


In 2018, Team McDadi donated \$250,000 to Trillium Health Partners Foundation.
In 2020, we increased our pledge to donate \$1,000,000.



**Official Real Estate Brokerage
of the Toronto Raptors**

Sam McDadi BSc, M.B.A. Sales Representative.



Mississauga | 5805 Whittle Rd #110 | 905 502 1500
N. Mississauga | 1034 Clarkson Rd | 905 823 1500
Milton | 1264 Main St E. | 905 876 1300
Oakville | 78 Lakeshore Rd W. | 905 845 1500
Toronto | 3311 Yonge St | 416 544 1500
Burlington | 3-4130 Fairview Street | 905 333 1100
Hamilton | 110-442 Millen Rd | 905 664 5100