

**Lot 161**  
**3139 Goodyear Rd**  
**Burlington**

Assignment Sale  
\$2,288,000



\*Property under construction. Photos of actual unit not yet available.



# Welcome to Burlington's Alton Village West

A beautiful development of elegant detached homes crafted by Sundial Homes! Inside the remarkable 'Wheaton' model that sits on a premium sized lot is 3,250 sq ft above grade with a modern open concept interior featuring 9 ft ceilings, hardwood floors on the main and upper level, a sophisticated kitchen with quartz countertops and island + large principal rooms! The second level hosts 4 spacious bedrooms with semi-ensuites and a prodigious primary suite designed with a walk-in closet and 5 pc ensuite! Great size loft upstairs, perfect for converting into an office, play room, movie theatre, etc. Basement offers 705 sq ft of finished space! Property backs onto the park for extra privacy! Great location!! Beautiful finishes throughout with \$10k spent in upgrades!

*\*Illustrations are artist's concepts and may not be representative of the final product. Specifications are subject to change without notice.*







\*Images are for illustrative purposes only





\*Images are for illustrative purposes only





\*Images are for illustrative purposes only





\*Images are for illustrative purposes only





\*Images are for illustrative purposes only





\*Images are for illustrative purposes only





\*Images are for illustrative purposes only

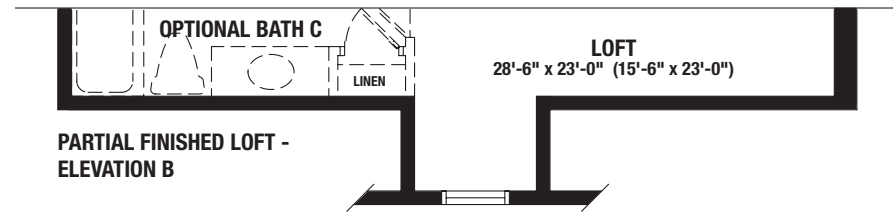
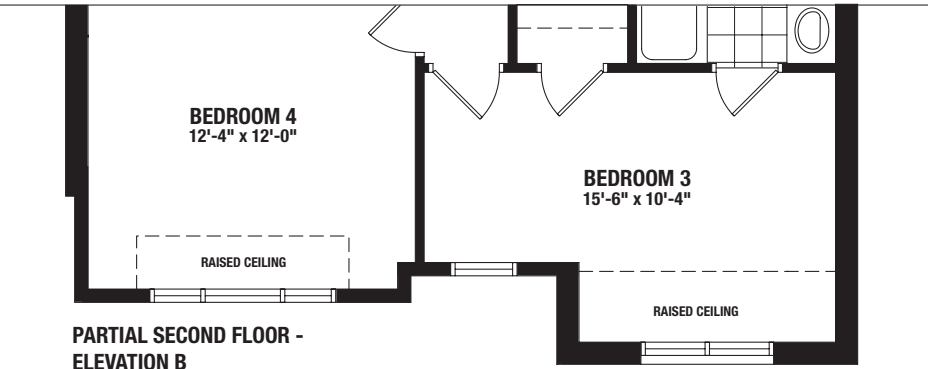
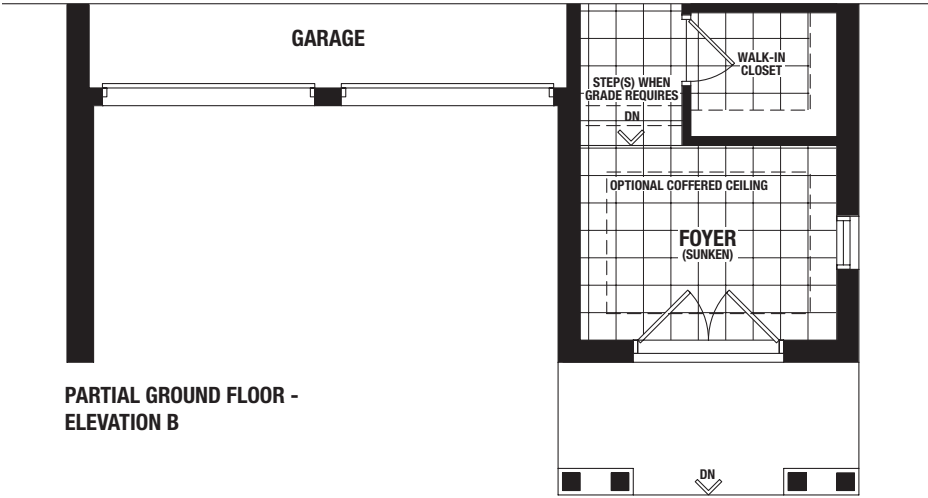
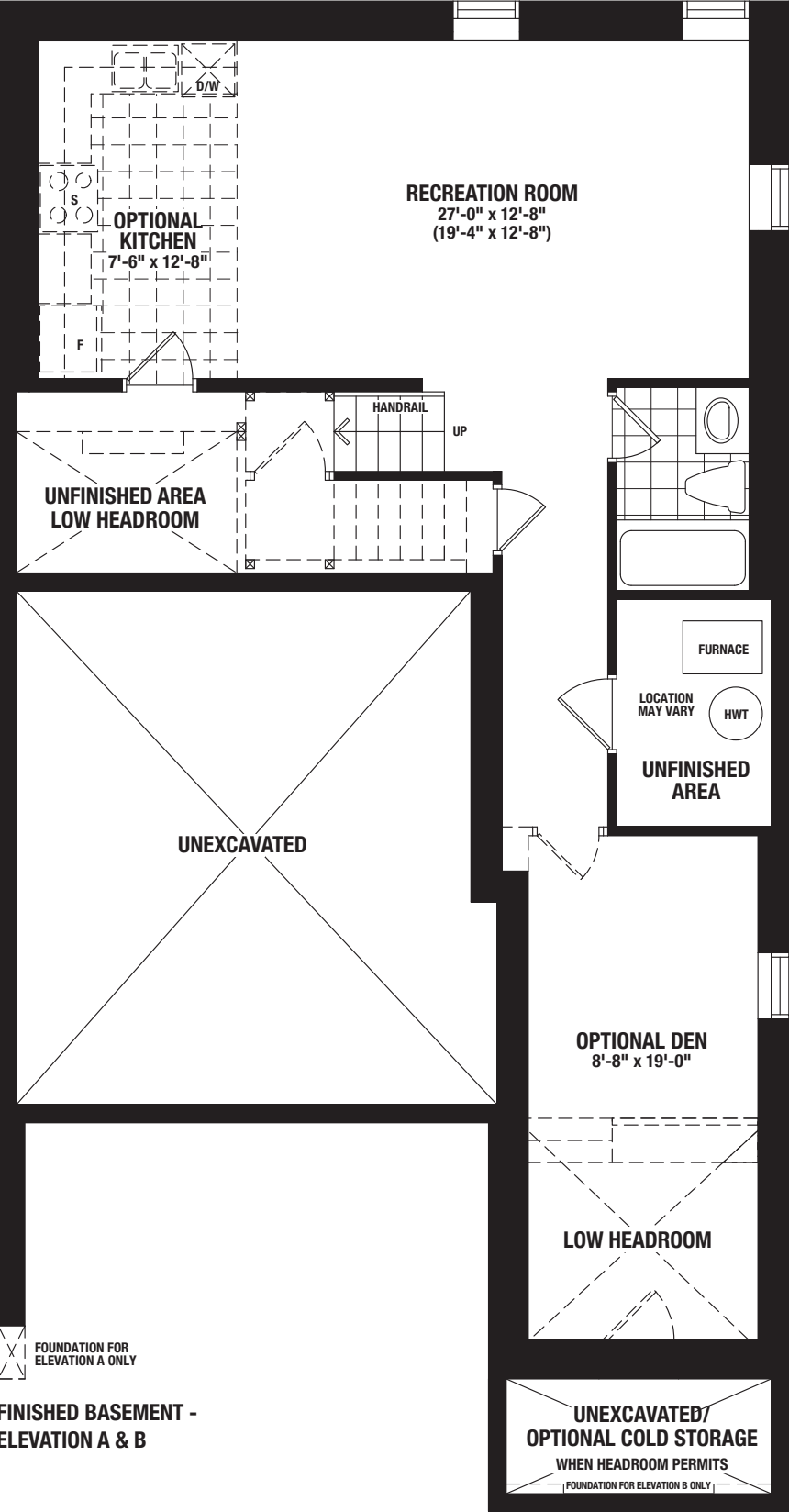


# FLOOR PLAN

## Elevation B

Total: 4,016 sq ft

Includes 705 sq ft of finished basement





# SITE PLAN & AMENITIES







## When you choose Team McDadi, **you help**

Sam McDADI is also a proud supporter  
of numerous charitable organizations:

- Canadian Cancer Society
- Canadian Diabetes Association
- Schizophrenia Society of Ontario
- Sick Kids
- Princess Margaret Hospital Association
- Trillium Health Care
- Rouge Valley Health System
- The Mississauga Food Bank
- The Compass Food Bank
- Mississauga Santa Claus Parade
- Rouge Valley Health System Foundation and Club
- Tennis Canada
- Erindale Little League Tennis Canada
- Heartland Dragons Minor Hockey Association
- Mississauga Girls Hockey League
- Tender Years Co-op
- The Mississauga Tigers
- Port Credit Skating Club
- Batter Up Baseball School
- The Art of Giving
- Family Jingle and Mingle
- Niators - Youth Uniting the Community

## Sam McDadi Real Estate Brokerage **is proud** **to donate a portion** **of each sale to the**



In 2018, Team McDadi donated \$250,000  
to Trillium Health Partners Foundation.  
**In 2020, we increased our pledge to  
donate \$1,000,000.**



 Facebook  
/teammcdadi

 Youtube  
/sammcdadi

 Instagram  
/sammcdadi

 LinkedIn  
Sam McDadi



5805 Whittle Rd #110 Mississauga  
1034 Clarkson Rd N. Mississauga  
1264 Main St E. Milton  
78 Lakeshore Rd W. Oakville  
3311 Yonge St Toronto  
3 - 4130 Fairview Street, Burlington  
110-442 Millen Rd, Hamilton

905 502 1500  
905 823 1500  
905 876 1300  
905 845 1500  
416 544 1500  
905 333 1100  
905 502 1500